

# 16105 80a Avenue, Surrey

\$1,468,000



Don't miss the rare opportunity to own this traditional, bright and spacious home. Centrally located in a desirable family friendly neighbourhood, just steps from Fleetwood Park, community centre, Library, schools, sports complex, transit, specialty shops and restaurants. With space, function and design in mind, this lovely home offers 4-5 bdrm, 3 full bath, a generous kitchen that opens to the informal dining , family room and the private backyard is sizable and comes with a storage shed. An office and full bath on main can possibly be your mortgage helper. Over years there are lot of updates done including appliance, hardwood floor, shower enclosure, crown molding, roof, etc. More photos and video see Realtor's website. Price reduced by \$120k. Get it before it's gone.

## KEY INFORMATION

MLS® R2590418

Residential Detached

Fleetwood Tynehead

4 Bedrooms

3 Bathrooms

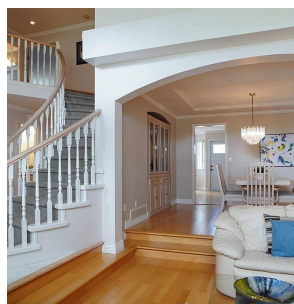
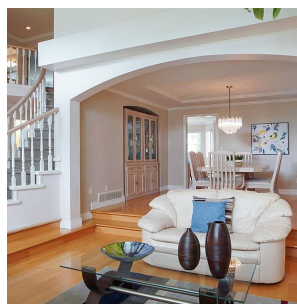
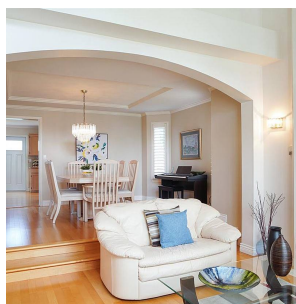
2,713 SF

7,092 SF Lot

## FEATURES

Year Built: 1992

Listed By: Heller Murch Realty



rennie