

# 911 175 Victory Ship Way, North Vancouver

\$1,200,000



One of the rear opportunities to own this sub-penthouse unit with Ocean, Downtown, and Stanley Park View in the famous Cascade at the Pier developed by Pinnacle International. The unit comes with Central A/C, 9 ft ceilings, German appliances, exquisite wood flooring, granite countertops & Italian Scavolini kitchen cabinets. You will also have access to the amenities of the five star Pinnacle Hotel to include lap pool, steam room, sauna, gym & more. Walking distance to Seabus gives you easy access to Downtown and connection to Skytrains, First showings Jun 12 & 13, Sat & Sun 2-4pm, by appointment only.

## KEY INFORMATION

MLS® R2590238

Residential Attached

Lower Lonsdale

2 Bedrooms

2 Bathrooms

848 SF

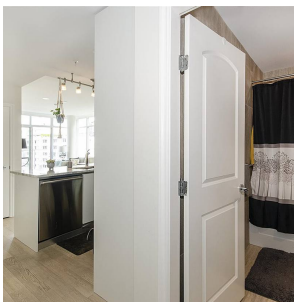
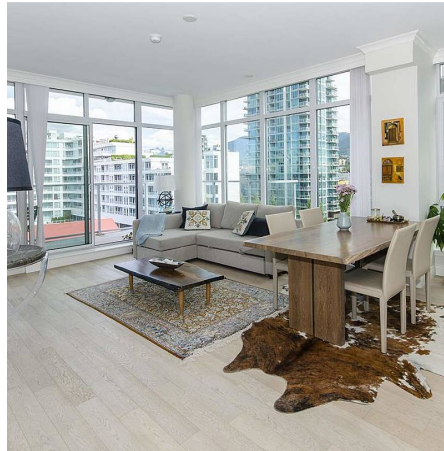
\$353.00 Maintenance Fees

## FEATURES

Year Built: 2018

Views: OCEAN AND MOUNTAIN

Listed By: Ohmproperty



rennie