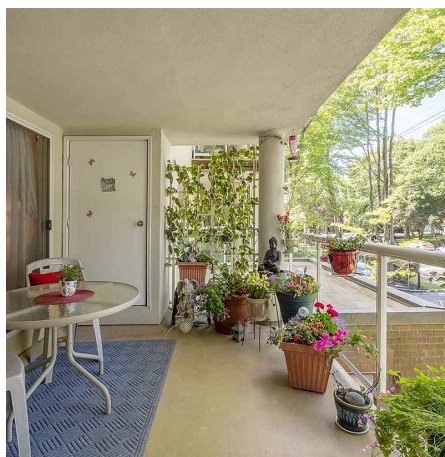
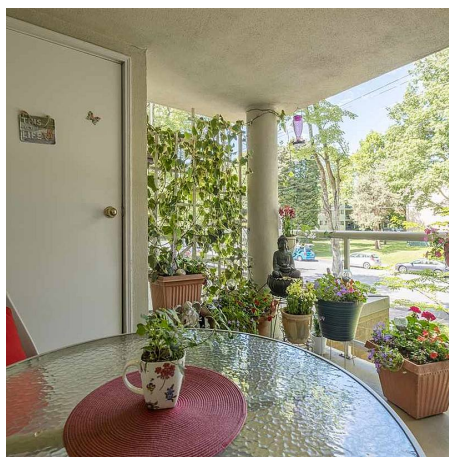


# 113 8300 Bennett Road, Richmond

\$548,500



VERY LARGE,BRIGHT,1BDRM+DEN/  
OFFICE,WITH 100SQ FT BALCONY FACING  
QUIET STREET,WITH BEAUTIFUL LOOK-  
OUT TO TREES AND BOULEVARD PEAK-A-  
BOO MOUNTAIN VIEW. MASTER BEDROOM  
WITH BALCONY WALK-OUT IS HUGE AND  
CAN ACCOMMODATE CALIFORNIA KING  
WITH SIDE BY SIDE CLOSETS LEADING TO  
EN-SUITE BTHRM.SEMI-OPEN DESIGN  
WITH GREAT LAYOUT FOR LVGRM AND  
WELL DEFINED DINING NG  
AREA.BUILDING LOVINGLY  
MAINTAINED,PRIDE OF OWNERSHIP  
EVIDENT WITH GORGEOUS FLOWER  
GARDENS,CROPPED LAWNS/ COMMON  
AREAS SPOTLESSLY TAKEN CARE OF.  
BUILDING IS A COMMUNITY,NO RENTALS  
WITH OWNERS WHO TAKE PRIDE IN  
THEIR HOMES AND PROPERTY. CLOSE TO  
PARKS,RECREATION,PUBLIC LIBRARY,REST  
AURANTS,SHOPPING,TRANSPORTATION,TH  
EATRES.GREAT VALUE AT THIS  
PRICE!.CALL FOR PRIVATE SHOWING.



## KEY INFORMATION

MLS® R2591518

Residential Attached

Brighthouse South

1 Bedroom

2 Bathrooms

1,035 SF

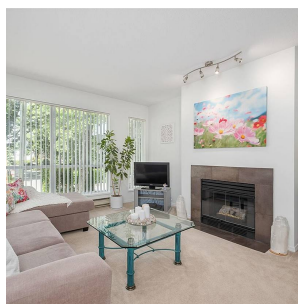
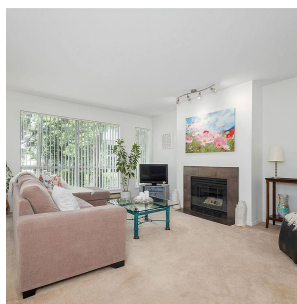
\$304.25 Maintenance Fees

## FEATURES

Year Built: 1991

Views: Peekaboo North Shore Mountains

Listed By: Osprey Properties Inc.



rennie