

# Ph8 983 E Hastings Street, Vancouver

\$599,900



Rarely available Corner Penthouse with over-height ceilings, expansive windows and a spectacular panoramic view. Includes laminate floors throughout, quartz counters, under-cabinet lighting, stainless steel appliances and a deep soaker tub. Very central location with the city's best restaurants/breweries around the corner and less than 5min to downtown. Concrete construction, durable metal siding and the balance of a new home warranty make this a great investment. Strathcona Village by Wall includes two rooftop terraces, two Gyms, communal gardens, two BBQs, fire pit, and a kids playground. Pets/rentals allowed, even short term. 1 parking & 1 storage locker included.

## KEY INFORMATION

MLS® R2591561

Residential Attached

Strathcona

1 Bedroom

1 Bathroom

550 SF

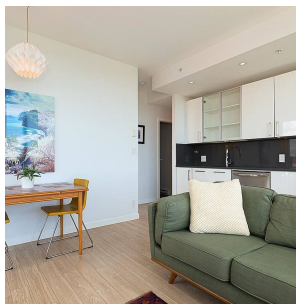
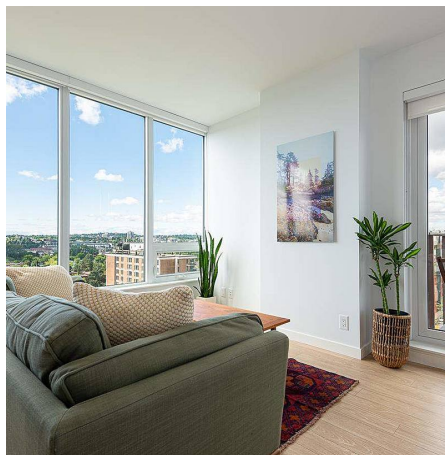
\$308.30 Maintenance Fees

## FEATURES

Year Built: 2017

Views: PANORAMIC CITY VIEW

Listed By: rennie & associates realty ltd.



**Ross Leathley**  
604.802.5468  
rleathley@rennie.com  
rennie.com/rossleathley

**rennie**