

# 507 4160 Sardis Street, Burnaby

\$599,000



Welcome to Central Park Place, spacious 2 bedroom corner unit overlooking complex gardens and situated in the Prime Central Park area. Walking distance to Patterson Skytrain Station and Swanguard Stadium. Well kept unit and well maintained building. Lots of upgrades and updates in recent years including Roof, Windows, Elevators, Parkade rooftop Gardening, etc. 2 side by side parking stalls and 1 huge storage locker (8' x 6') come with this unit. Hurry for this rare opportunity of ownership and call for your private showing schedule. Square footage taken from the Strata Plan and should be verified if deemed important. Covid-19 protocol to be followed during all showings.

## KEY INFORMATION

MLS® R2591807

Residential Attached

Central Park

2 Bedrooms

2 Bathrooms

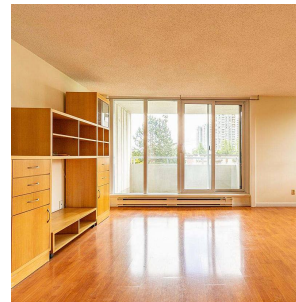
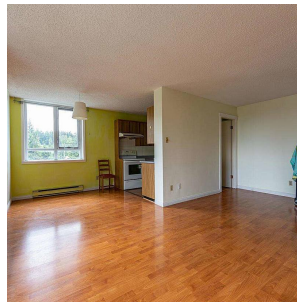
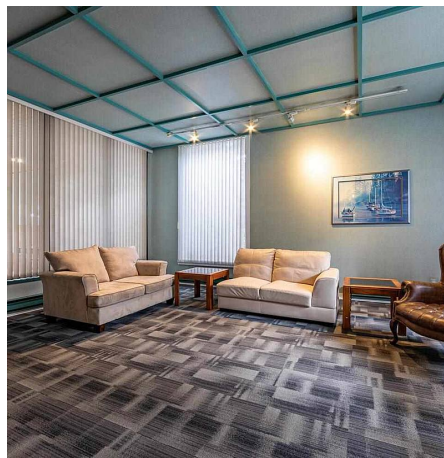
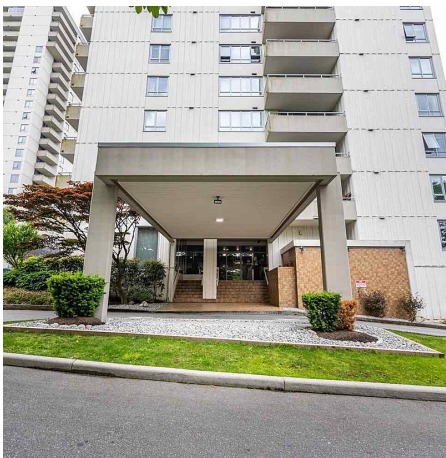
947 SF

\$394.24 Maintenance Fees

## FEATURES

Year Built: 1978

Listed By: Interlink Realty



rennie