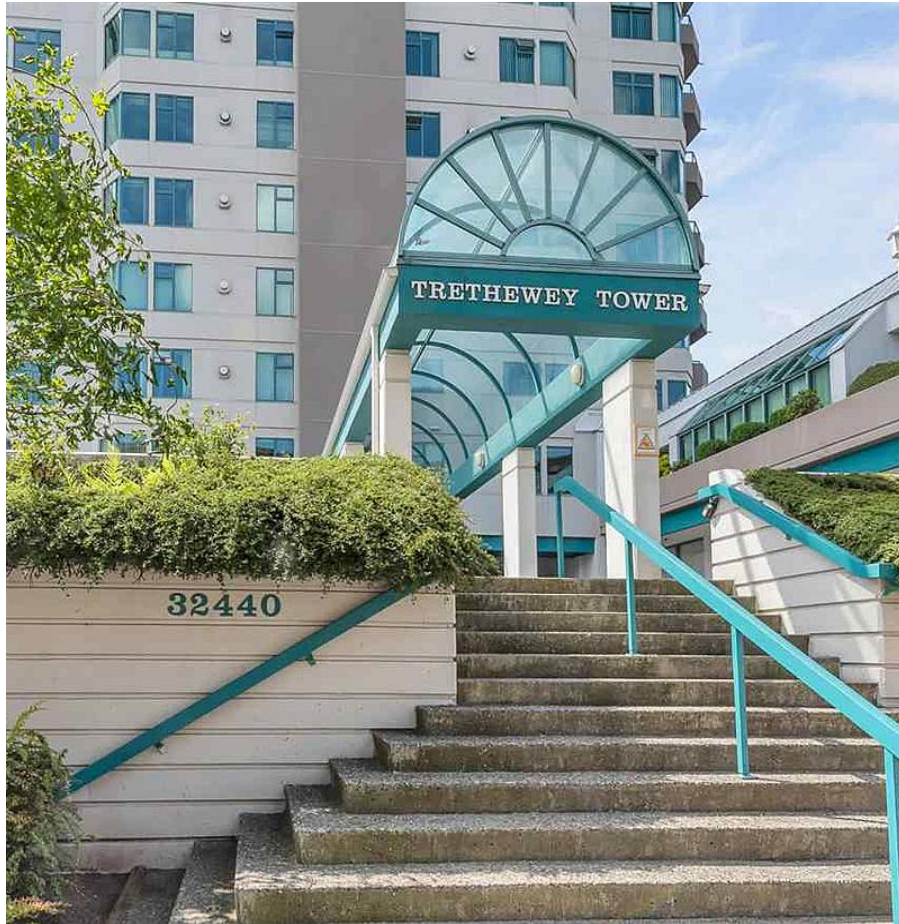


904 32440 Simon Avenue, Abbotsford

\$544,900



ABSOLUTELY GORGEOUS! Enter this meticulously kept 9th floor unit and you are immediately taken back by the unobstructed south east views of both the city and mountains. Spanning just over 1,230 sq feet this 2 BED 2 BATH corner unit will not disappoint. Enjoy cooking in your beautifully renovated modern kitchen with custom cabinetry, dark stainless LG appliances and a built in 20 bottle wine rack. Retreat to the huge master bedroom and you will find a spa like ensuite finished with a stunning tile feature wall and quartz counter tops. Slate patio, custom organizers in the closets and designer paint are just a few of the many other features. Centrally located and close to everything this no rental 45 plus building also features an indoor pool, hot tub, exercise room and workshop. Call today!

KEY INFORMATION

MLS® R2591612

Residential Attached

Abbotsford West

2 Bedrooms

2 Bathrooms

1,233 SF

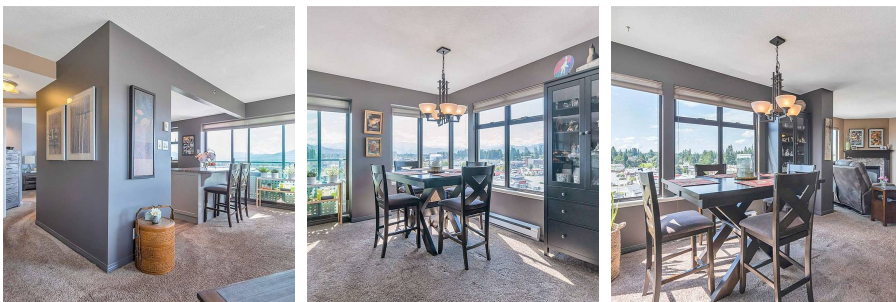
\$385.00 Maintenance Fees

FEATURES

Year Built: 1993

Views: Mt Baker

Listed By: Vybe Realty



rennie