

315 2250 E 1st Avenue, Vancouver

\$849,900



Templeton offers privacy with this top floor South facing 2 bedroom home in the heart of the city. An unparalleled location with rapid transit access to UBC, VGH, downtown and the new site of St. Paul's Hospital. Commercial Dr iconic neighborhood sits in the heart of Grandview Woodlands with shopping, restaurants and an abundance of beautiful parks just steps from your door. Kitchens feature chef appointed s/s Fisher & Paykel fridge & Bosch appliance package w/ Quartz countertops and backsplash. Space is key with a king-sized master suite and a private patio for entertaining. Modern flexibility with space for work, play & study, w/ the added Passive House benefits of 90% in heating costs savings and the healthiest breathing environment. AC is roughed-in & upgrade avail

KEY INFORMATION

MLS® R2591816

Residential Attached

Grandview Woodland

2 Bedrooms

1 Bathroom

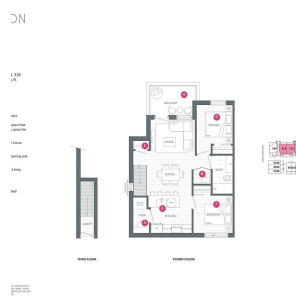
832 SF

\$241.14 Maintenance Fees

FEATURES

Year Built: 2023

Listed By: Dimex Realty Inc.



rennie