

46840 Thornton Road, Chilliwack

\$2,399,000



SPECTACULAR NON ALR 11.76 acre property with PANORAMIC VIEWS of Chilliwack and the surrounding area. PRIVATE gated access, a 4647 sq ft executive home, 3 bay GARAGE that will fit your RV, 4 stall BARN and a dog run included. Greenhouse, large garden area with numerous fruit trees can be your Garden of Eden. Next door is an ecological reserve for added privacy. The home has an expansive living room with a featured brick fireplace, chef's kitchen has been professionally updated and has a large walk-in pantry. Master bedroom suite with views to make anyone ready to start the day! Two MASSIVE games/craft rooms make for great entertaining! very good source of well water, together with a cistern float system and UV filter. Propane back up 20kw generator which provides power to all buildings.

KEY INFORMATION

MLS® R2592052

Residential Detached

Chilliwack

6 Bedrooms

3 Bathrooms

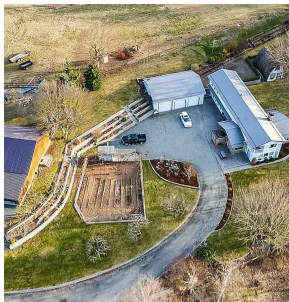
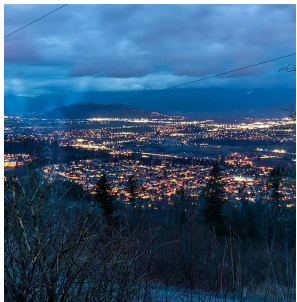
4,647 SF

512,265 SF Lot

FEATURES

Year Built: 1967

Listed By: Royal LePage Wheeler Cheam



rennie