

# 418 15735 Croydon Drive, Surrey

\$559,000



**TOP FLOOR !** The ultimate lifestyle in Morgan Crossing - A highly walkable, European inspired village in the heart of South Surrey, 10 min to the beach. Welcome to this penthouse level 2 bedroom (separated), 2 bathroom residence in The Main, overlooking the vibrant village and away from the HWY. One of the largest 2 bed floor plans, laminate flooring throughout living areas, great dining or desk nook, king sized master with double closets & tub/shower combo. Full size SS appliances w/large island + tons of storage. Bonus: TWO parking + locker. Walk out & grab your morning coffee, groceries at Thrifty Foods, London Drugs, Chapters, Lululemon, & more. Life is better here, don't miss this rare opportunity!

## KEY INFORMATION

MLS® R2592391

Residential Attached

Grandview Surrey

2 Bedrooms

2 Bathrooms

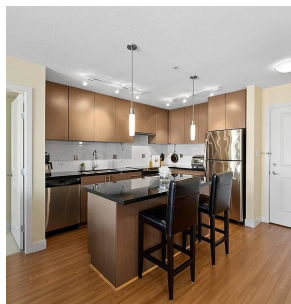
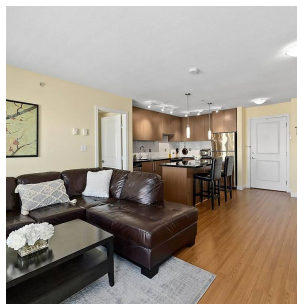
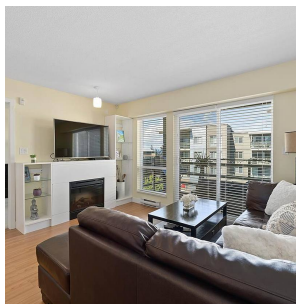
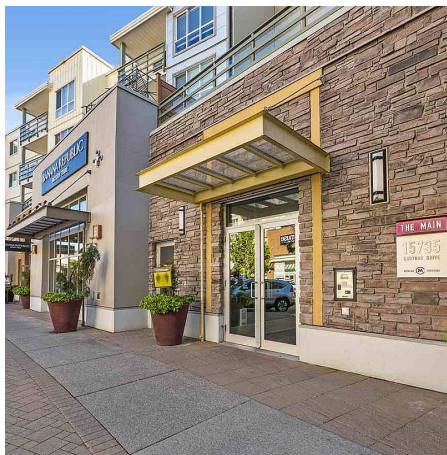
956 SF

\$377.78 Maintenance Fees

## FEATURES

Year Built: 2009

Listed By: Engel & Volkers Vancouver



rennie