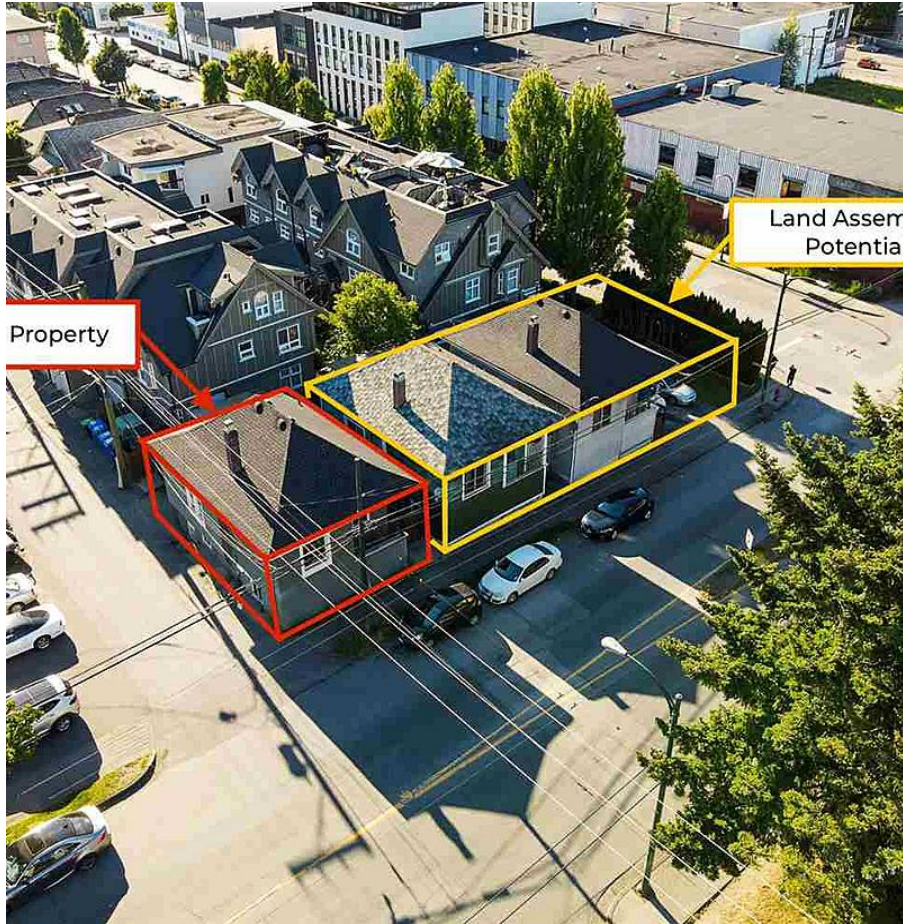


# 517 Commercial Drive, Vancouver

\$899,000



Incredible opportunity to become part of a unique development site in the heart of "The Drive", one of Vancouver's most coveted neighbourhoods. Designated under the Grandview Woodlands Official Community Plan with potential to assemble the homes to the immediate North for a higher density use. Excellent holding property with a \$41,376 annual income providing a 4.6% Cap Rate. Five bedroom 1910 Character Home offering 2 separate suites. Centrally located on Commercial Drive, just steps to public transit, Templeton Secondary, Woodland Park, Pepino's, Downlow Chicken, Bosa Foods and The Gourmet Warehouse. Contact listing realtor for further details.

## KEY INFORMATION

MLS® R2592727

Residential Detached

Hastings

5 Bedrooms

2 Bathrooms

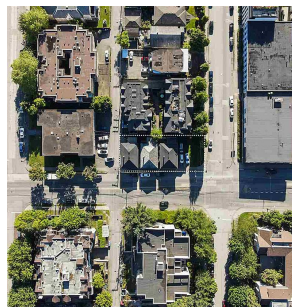
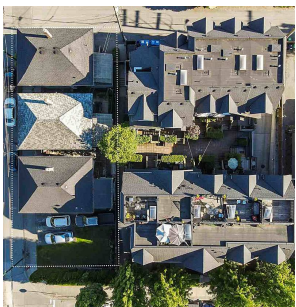
1,439 SF

5,368 SF Lot

## FEATURES

Year Built: 1910

Listed By: Century 21 In Town Realty



rennie