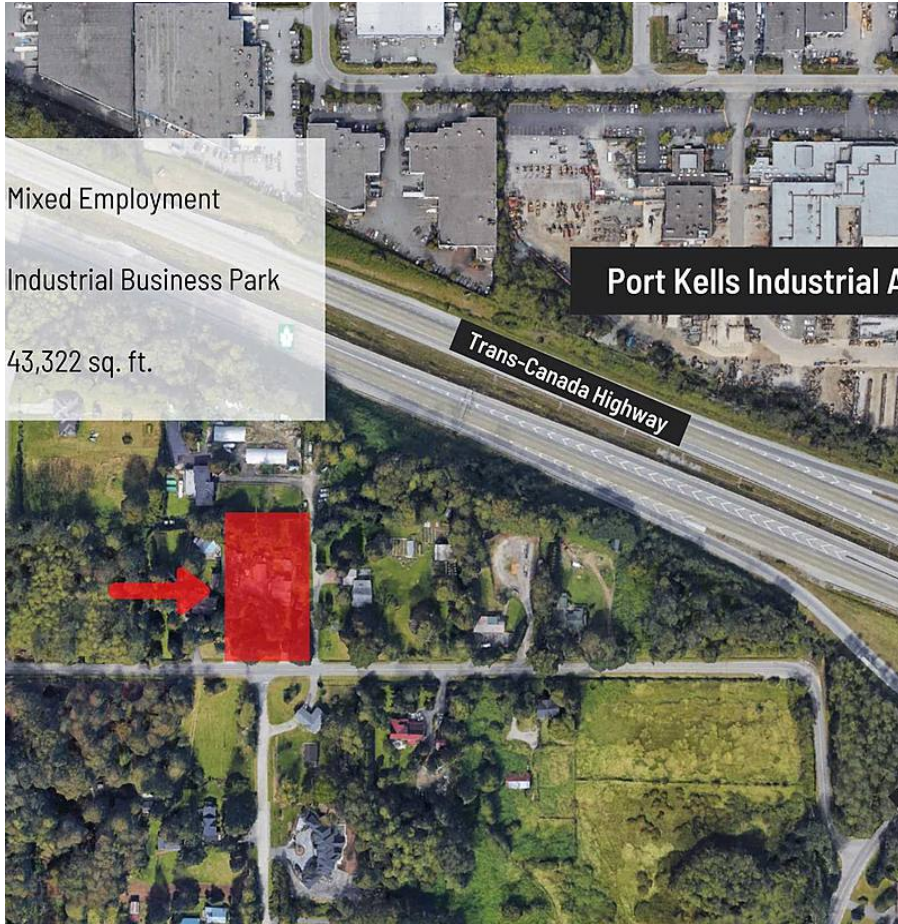


18889 92 Avenue, Surrey

\$2,800,000



INVESTOR & DEVELOPERS ALERT! Prime holding property in the Anniedale Tynehead NCP designated Industrial Business Park which allows for mixed use office and warehouse. Minutes to Trans-Canada Highway, Golden Ears Way & the Port Kells Industrial Park. A great investment to hold and develop in the future.

KEY INFORMATION

MLS® R2592973

Residential Detached

Port Kells

5 Bedrooms

1 Bathroom

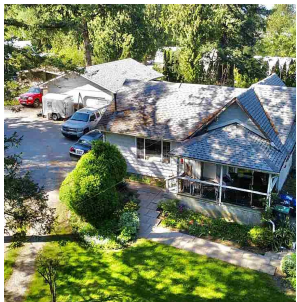
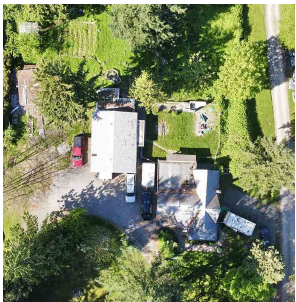
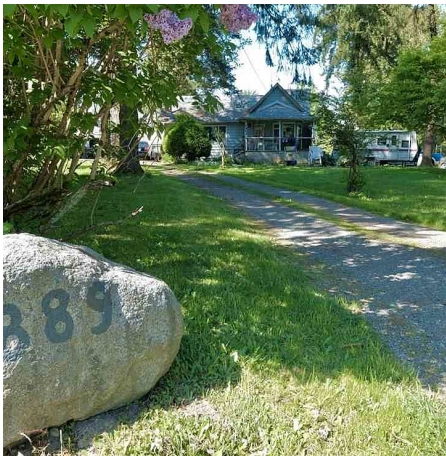
1,809 SF

43,322 SF Lot

FEATURES

Year Built: 1924

Listed By: Century 21 Coastal Realty Ltd.



rennie