

3309 4485 Skyline Drive, Burnaby

\$930,000



Atlas in Solo District by Bosa! The most desirable community in Brentwood area. South facing air-conditioned 2 br + 2 ba suite offers functional layout with no wasted space. Open concept design, modern color scheme, laminate flooring, and gourmet kitchen boasts high end S/S appliances, gas stove and granite counter tops. Floor to ceiling windows offers abundant natural light and breathtaking unobstructed city & mountain views. Geothermal heating & cooling system. Resort like amenities, full equipment gym, BBQ area, basketball court and exclusively use of 5000 sq ft rooftop lounge. Steps away from Brentwood Mall, Brentwood Skytrain Station, Whole Food & Starbucks, easy access to Metrotown & Downtown Vancouver.

KEY INFORMATION

MLS® R2593096

Residential Attached

Brentwood Park

2 Bedrooms

2 Bathrooms

919 SF

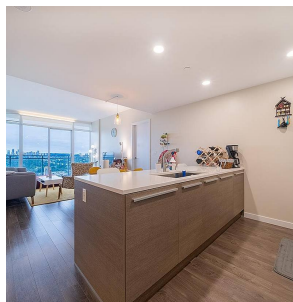
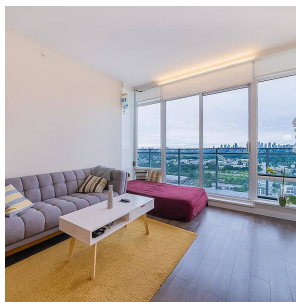
\$578.61 Maintenance Fees

FEATURES

Year Built: 2017

Views: CITY&MOUNTAIN VIEW

Listed By: LeHomes Realty Premier



rennie