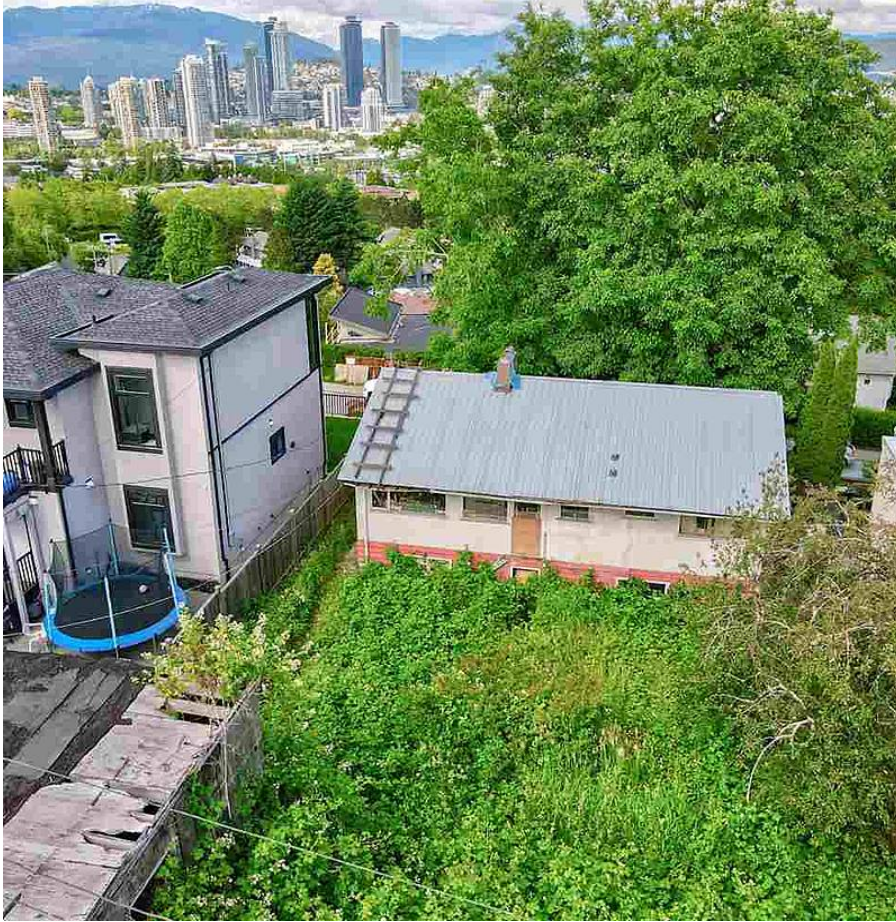


4014 Nithsdale Street, Burnaby

\$1,599,800



BUILDER ALERT! PRIME Burnaby location just steps from Burnaby hospital. 6000 sq/ft lot on high side of the street with potential for unobstructed mountain and city views. R5 zoned to accommodate a 3 story home with legal suite. Lot size will accommodate 4300 sq/ft home, plus 452 sq/ft detached garage on laneway. Extremely desirable neighbourhood close to shopping, parks, BCIT, SFU, Cascade Heights Elem, Vancouver Christian School. Quick access to HWY 1, Metrotown shopping and more.

KEY INFORMATION

MLS® R2592594

Residential Detached

Burnaby Hospital

3 Bedrooms

1 Bathroom

2,080 SF

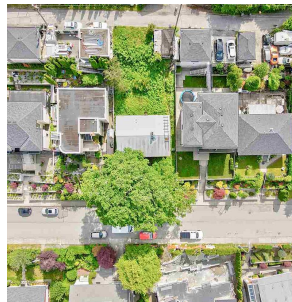
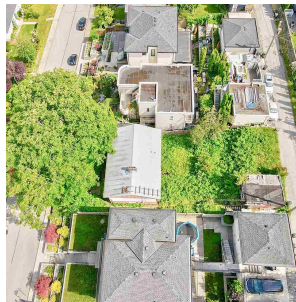
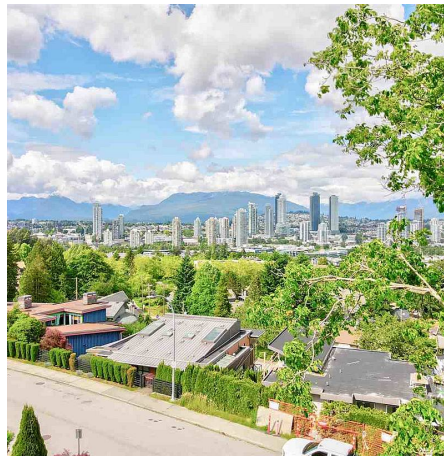
6,000 SF Lot

FEATURES

Year Built: 1951

Views: City/Mountain

Listed By: RE/MAX All Points Realty



rennie