

1510 668 Columbia Street, New Westminster

\$698,000



EXPANSIVE WATER VIEWS FROM EVERY WINDOW in this 2 Bed/2 Bath & Den at the desirable Trapp & Holbrook. This building is right in the soul of historic Downtown New Westminster. Meticulously designed interiors create the perfect backdrop to the sophisticated and welcoming grand living space. Soaring windows throughout the residence draw in an abundance of natural light to flow through this gem of a home. SOUTH EAST Exposure & a generous sized patio deck perfect for morning coffees, evening BBQ's. Located 1 block from both SKYTRAINS, River Market, Pier Park & a ton of amenities just an elevator ride away. Includes: Parking & Storage, access to fitness facility, clubhouse & GARDEN DECK w/ Fire Pit & Lounge seating.

KEY INFORMATION

MLS® R2593696

Residential Attached

Quay

2 Bedrooms

2 Bathrooms

1,019 SF

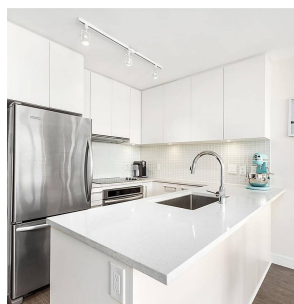
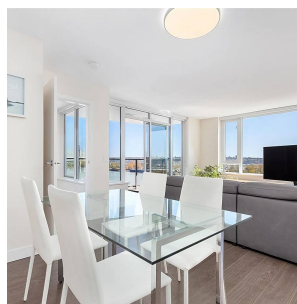
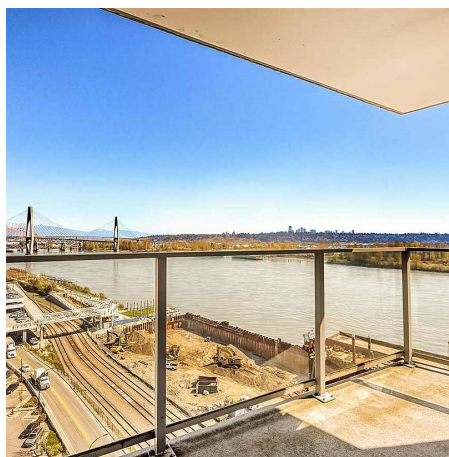
\$489.01 Maintenance Fees

FEATURES

Year Built: 2015

Views: FRASER RIVER, MOUNTAINS, CITY

Listed By: rennie & associates realty ltd.



Shelly Vellani PREC*

604.710.3681

svellani@rennie.com

rennie.com/shellyvellani

rennie