

2005 13495 Central Avenue, Surrey

\$556,800



Welcome to the iconic 3 CIVIC PLAZA! Centrally located in Downtown Surrey with the most transit-friendly community. This 1 Bed PLUS Den CORNER UNIT has 180° spectacular East facing unobstructed City & Mountains VIEWS, open floor layout, Blomberg integrated refrigerator, and quartz countertops. Steps away from Surrey Central Skytrain, city hall, library, SFU, KPU, Central City mall, T&T Supermarket, and many restaurants. Come with 1 parking and 1 storage locker. This LOCATION & VIEW can not be beat. Great to live in or invest. CALL NOW to book your private showing!

KEY INFORMATION

MLS® R2593998

Residential Attached

Whalley

1 Bedroom

1 Bathroom

679 SF

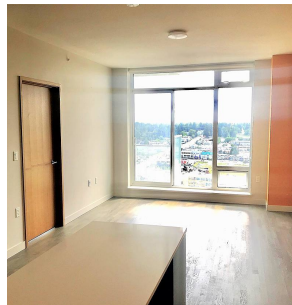
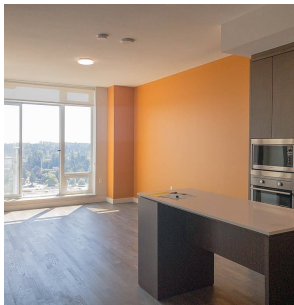
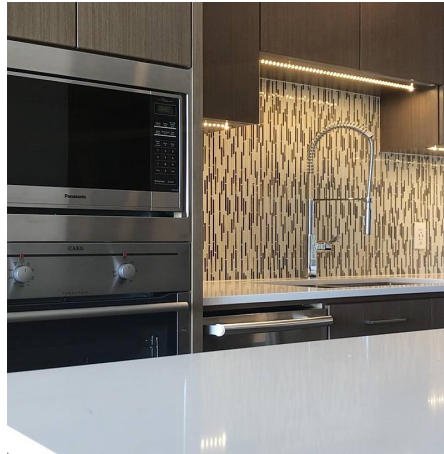
\$374.59 Maintenance Fees

FEATURES

Year Built: 2018

Views: MOUNTAIN AND CITY VIEWS

Listed By: Sutton Centre Realty



rennie