

409 13931 Fraser Highway, Surrey

\$509,999



Welcome to Verve by Porte. A beautifully designed building by award-winning Studio One Architects. This beautiful one bed & den top floor/penthouse unit comes with an 11ft high ceiling, high gloss kitchen cabinets, polished quartz countertops, energy star stainless steel appliances, engineered laminate flooring and a deluxe bathroom with custom-designed vanities with polished countertops, porcelain tile floors & square profile deep soaker tub. Verve is minutes away from King George Skytrain Station, Bus routes, Central City Shopping Centre, T&T, Library, Hospital, Parks and Simon Fraser University. Great for investment or for First-Time Buyers. No RENTAL RESTRICTION. TWO PETS ALLOWED. Showings are by appointment only. PLEASE NOTE: PICTURES IN THIS LISTING ARE FROM THE PREVIOUS LISTING.

KEY INFORMATION

MLS® R2594322

Residential Attached

Whalley

1 Bedroom

1 Bathroom

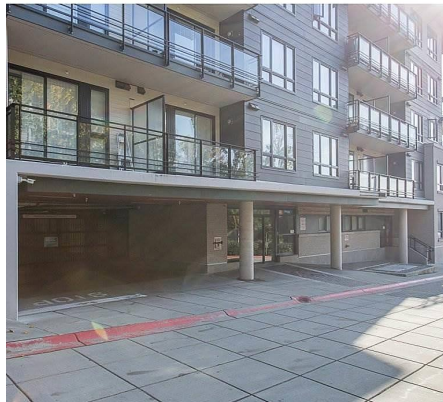
700 SF

\$236.51 Maintenance Fees

FEATURES

Year Built: 2014

Listed By: RE/MAX Crest Realty



rennie