

19787 Brighton Place, Pitt Meadows

\$899,000



Welcome to MORNINGSIDE! This well-maintained, south-facing single detached home has 4 bedrooms 3 bathrooms is located in a highly desirable neighbourhood in Pitt Meadows. It is 2 storeys with a full basement and features an open floor plan with plenty natural light, vaulted ceilings, spacious bedrooms on the top floor, and lots of storage space. The finished basement has a bedroom, recreation room and two additional storage rooms with an expansive crawl space. It also includes a heat pump with AC, built in vacuum, and is a power smart home. Park your vehicles in the double garage or on your driveway. Conveniently located within walking distance to public transit, the West Coast Express, shops and restaurants, parks, walking trails and a 6 minute drive to Osprey Village.

KEY INFORMATION

MLS® R2594647

Residential Detached

Central Meadows

4 Bedrooms

3 Bathrooms

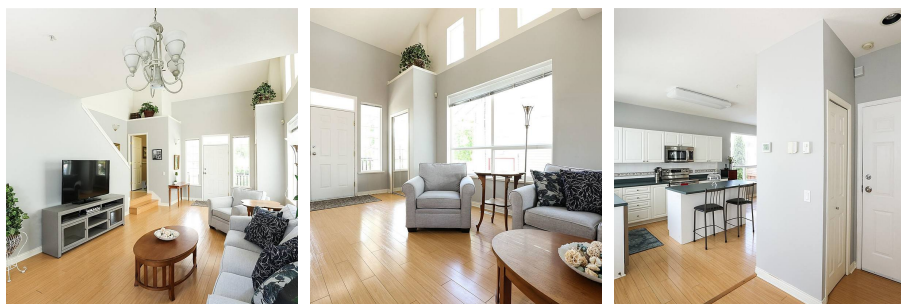
2,470 SF

2,852 SF Lot

FEATURES

Year Built: 1998

Listed By: Sutton Group - 1st West Realty



rennie