

3902 4508 Hazel Street, Burnaby

\$469,000



Rare investment opportunity to own this studio unit in Sovereign by Bosa Properties. This prestigious tower sits atop an international high-end hotel & prime retails in the heart of Metrotown. Sovereign is the ultimate in convenience, located across the street from shopping & just a short walk to Metrotown Skytrain Station. The south facing unit with sunshine and expansive ocean, city and central park view. Features include Centralized air conditioner, Miele kitchen appliance package & Kohler fixtures, 1 parking and 1 storage locker. Walking distance to Skytrain, Crystal Mall, Metropolis, many restaurants, supermarkets. Enjoy exclusive amenities like gym, indoor pool, sauna/steam, hot tub, indoor/outdoor party room & concierge! Private showings only.

KEY INFORMATION

MLS® R2594570

Residential Attached

Forglen

0 Bedrooms

1 Bathroom

399 SF

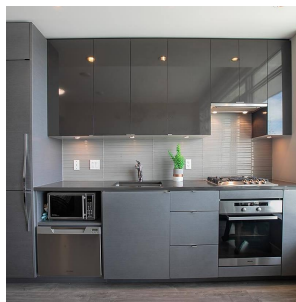
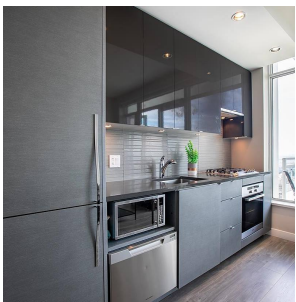
\$224.54 Maintenance Fees

FEATURES

Year Built: 2015

Views: Centrral Park, Richmond, Fraser

Listed By: Oakwyn Realty Ltd.



rennie