

6030 172a Street, Surrey

\$1,249,000



GEORGOUS 3/4 BR, 4 BA home in a HIGHLY DESIRED neighbourhood near many schools, shops, Cloverdale Athletic Park and minutes away from Cloverdale Rec. Amazing backyard with a secluded setting and its own SWIMMING POOL and HOT TUB! House is updated inside with beautiful finishings, a true MUST SEE. Very quiet street with tons of privacy. Property sits on a LARGE rectangular lot with 60ft of frontage. Lot is over 8500sqft.

KEY INFORMATION

MLS® R2594962

Residential Detached

Cloverdale

4 Bedrooms

4 Bathrooms

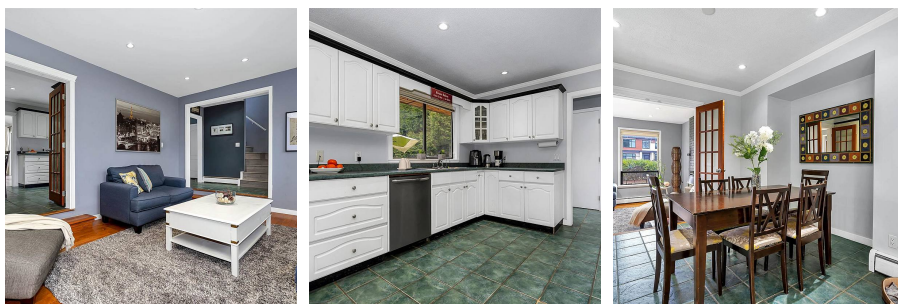
2,066 SF

8,568 SF Lot

FEATURES

Year Built: 1978

Listed By: Royal LePage - Wolstencroft



rennie