

1301 2425 Alpha Avenue, Burnaby

\$809,900



Tailor by Marcon located in the heart of Brentwood. Only minutes walking distances to Brentwood Skytrain station, Brentwood mall, Whole foods, Starbucks, major banks, Winners, and only a few minutes drive from Costco, BCIT, SFU, CEFA, Steve Nash, Deer lake park and much more. This stunning corner 2 bedroom home features an airy 9' ceiling, high efficiency heating and AC system, expansive window in the kitchen, Bosch 30' appliances package, double pantry, floating vanity motion sensor lighting in ensuite, 1 EV parking & 1 locker included. Premium first-class amenities including fully equipped fitness Centre, yoga/stretch room, co-working area, dog run and more. **LIMITED TIME PROMOTION:** 2% credit and only 10% deposit. Open by appointment from Sat to Thurs 12-5pm.

KEY INFORMATION

MLS® R2594931

Residential Attached

Capitol Hill

2 Bedrooms

2 Bathrooms

764 SF

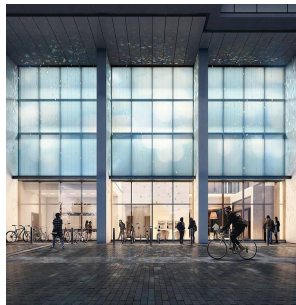
\$445.18 Maintenance Fees

FEATURES

Year Built: 2024

Views: City View

Listed By: Rennie Marketing Systems



rennie