

# 401 13655 Fraser Highway, Surrey

\$438,000



The King George Hub in the Heart of Surrey located walking distance to Skytrain and much more. Beautiful 1 bedroom 1 bathroom unit equipped with S/S Appliances with built-in wall oven and microwave, built-in closet in bedroom. Bonus extra large balcony as well as amenities including fitness centre, dining terrace with fire pit and more. Walking distance to transit, shopping, restaurants, SFU, Kwantlen University, and Recreation centre. Move in ready. Ideal for investors or first time home buyer. Call now for a private appointment.

## KEY INFORMATION

MLS® R2595851

Residential Attached

Whalley

1 Bedroom

1 Bathroom

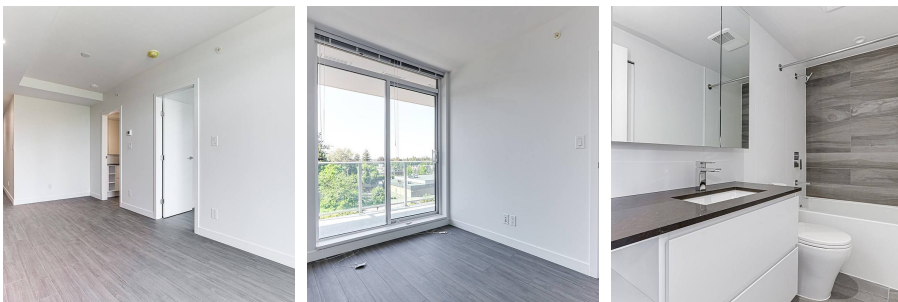
496 SF

\$250.00 Maintenance Fees

## FEATURES

Year Built: 2021

Listed By: Jovi Realty Inc.



rennie