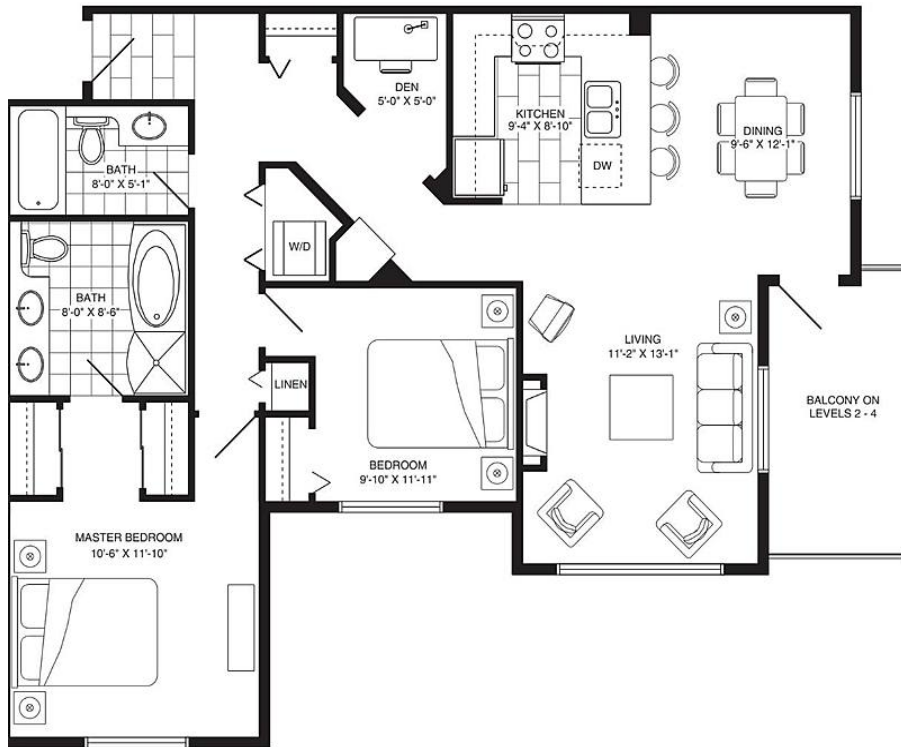


# 202 11667 Haney Bypass, Maple Ridge

\$485,000



WELCOME TO HANEY's LANDING. Close to nature close to home. This amazing corner unit on the second floor features granite counter tops & stainless steel appliances. The 2 bedroom and den unit also has 2 parking spots! and storage locker. Another unique feature of this unit is you don't walk into your kitchen when entering the unit like most condos, creating a nice separation between living space and bedrooms. The building is just steps from the West Coast express platform, short distance to downtown core of Maple Ridge. BOOK YOUR APPOINTMENT TODAY!! Courtesy Of RE/MAX LIFESTYLES REALTY: THE HAYES TEAM

## KEY INFORMATION

MLS® R2595907

Residential Attached

West Central

2 Bedrooms

2 Bathrooms

1,070 SF

\$389.89 Maintenance Fees

## FEATURES

Year Built: 2007

Views: GREENBELT

Listed By: RE/MAX LIFESTYLES REALTY

rennie