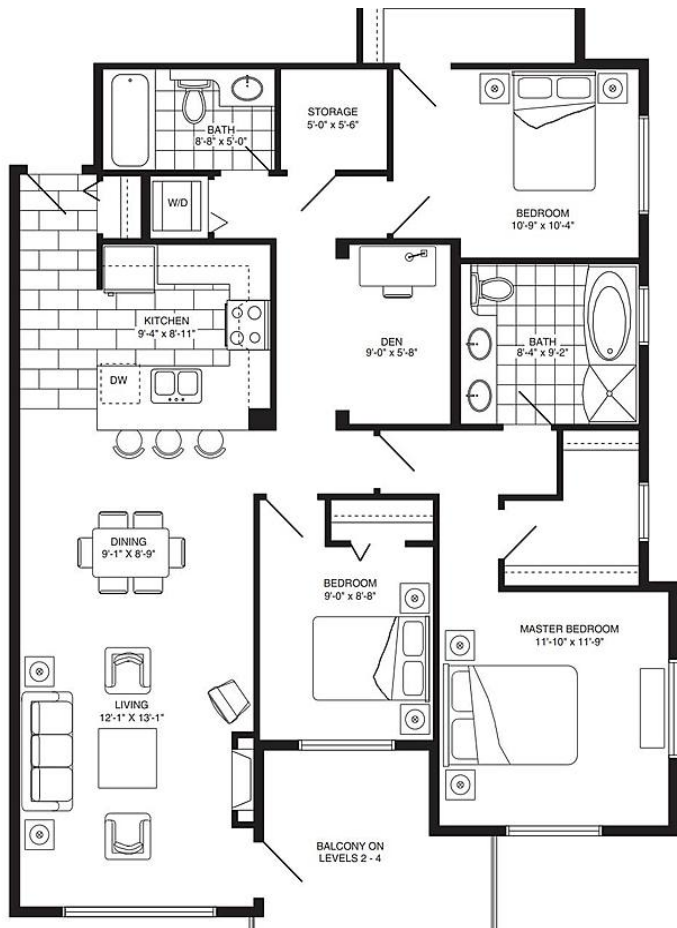


108-11667 Haney Bypass, Maple Ridge

\$565,000



WELCOME TO HANEY's LANDING. Close to nature close to home. This amazing corner unit on the ground floor features granite counter tops & stainless steel appliances. The 3 bedroom and den unit also has 2 parking spots! The unit also features a storage locker closet within the unit. The building is just steps from the West Coast express platform, short distance to downtown core of Maple Ridge. BOOK YOUR APPOINTMENT TODAY!! Courtesy Of RE/MAX LIFESTYLES REALTY: THE HAYES TEAM

KEY INFORMATION

MLS® R2596021

Residential Attached

West Central

3 Bedrooms

2 Bathrooms

1,343 SF

\$490.38 Maintenance Fees

FEATURES

Year Built: 2007

Views: GREENBELT

Listed By: RE/MAX LIFESTYLES REALTY