

# 2233 Crystal Court, Abbotsford

\$754,800



This manufactured home comes 5304 sq. ft. lot, with 3 bedroom and two full washroom and no strata fees. Close to schools, shopping and HWY 1. Many updates done by the current owner which includes updated floors, washroom, new kitchen, privates fully fence back yard. why pay strata fees so book your showing and see it for your self before it's gone!!!!!!!

## KEY INFORMATION

MLS® R2596018

Residential Detached

Poplar

3 Bedrooms

2 Bathrooms

1,300 SF

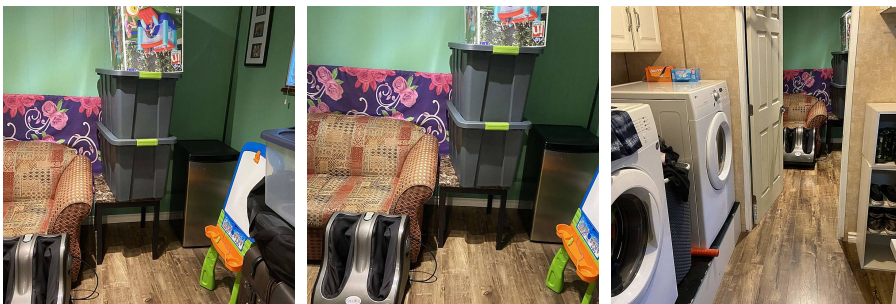
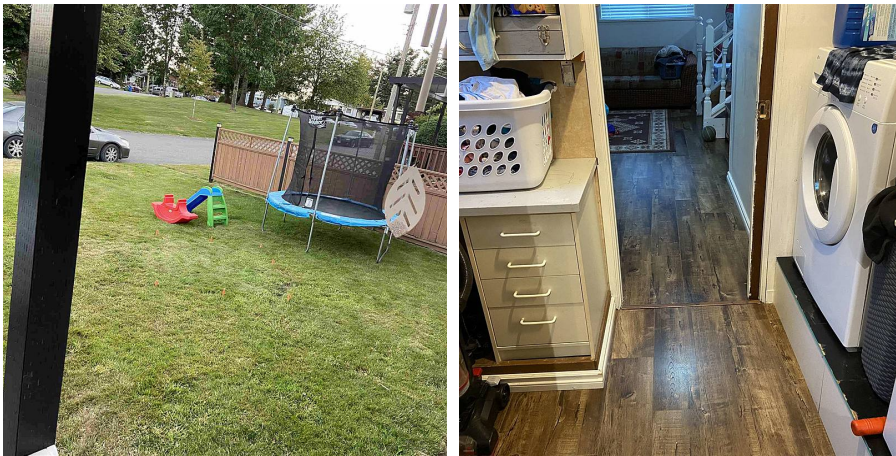
5,304 SF Lot

## FEATURES

Year Built: 1974

Views: NONE

Listed By: Planet Group Realty Inc.



**rennie**