

45750 Timothy Avenue, Chilliwack

\$749,000



Rare Sardis rancher for sale in quiet, family friendly cul-de-sac! This 3 bedroom 2 bath home could not be more perfect for a young family, first time home buyer, or investor looking for great income potential. Located within walking distance to schools, parks, shops, restaurants and the Vedder rotary trail. Home has been well maintained and features an open concept layout with extra living space in the converted single car garage. Huge, extra long driveway with access to back yard provides ample space for all your vehicles and even an RV. Large yard features garden space, covered patio area and storage shed.

KEY INFORMATION

MLS® R2596190

Residential Detached

Chilliwack

3 Bedrooms

2 Bathrooms

1,286 SF

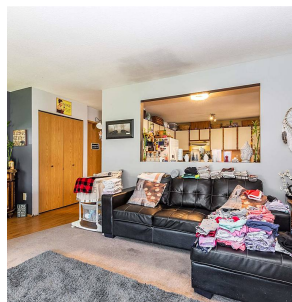
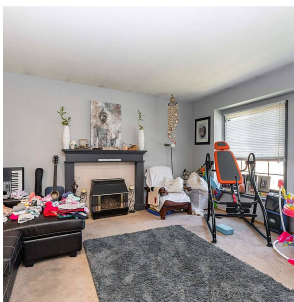
5,184 SF Lot

FEATURES

Year Built: 1987

Views: Mountain

Listed By: Royal LePage Wheeler Cheam



rennie