

14079 Grosvenor Road, Surrey

\$1,638,000



First time on the market in past 26 years. Large lot, 13440 sq ft and rectangular shape with mountain view. 3 bedrooms and 2 bathrooms on main floor. Modern newly renovated kitchen, floors and walls. 2nd kitchen area, 2 bedrooms and 1 full bathroom below. Potentially a rental suite can be easily established. Backyard has huge 22'x22' workshop or double garage with 220 power, extra storage room 9'x15', another storage room 10'x10', 3rd storage 10'x10', 2 gazebos, each sized 9'x9', storage space 8'x9' under main floor patio. Blooming flowers in front and back yard. Mature pear trees, black date tress, persimmon trees and cherry trees in backyard. Electronic wood and glass doors installed on 2 front carpports. Close to all level schools and Gate Way Sky Train station.

KEY INFORMATION

MLS® R2596100

Residential Detached

Bolivar Heights

5 Bedrooms

3 Bathrooms

2,382 SF

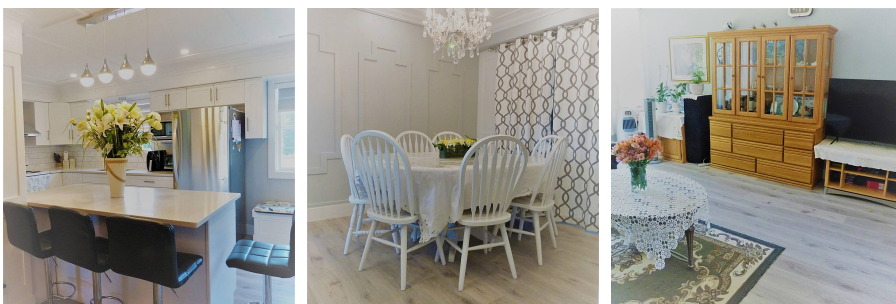
13,440 SF Lot

FEATURES

Year Built: 1973

Views: MOUNTAIN VIEW

Listed By: Saba Realty Ltd.



rennie