

428 Campbell Bay Road, Mayne Island

\$699,000



This unique 5.76ac parcel's Settlement Residential zoning allows 3 homes & 3 cottages without subdivision if held by 3 owners. Centrally located just uphill from Miners Bay, includes a vintage 850 sq.ft cottage built in 1935, currently rented. 2 GPM drilled well, shed, septic, hydro installed. A weeping willow, tall chestnut tree and a wild rose bush in the front yard give privacy from the road. Sunny property and entirely level. Treed with fir, cedar, a lone arbutus tree and a good blackberry patch. Low density area next to a neighbouring farm. Nearby 1 ac. lot, sold recently for \$189,000 without hydro or water, gives perspective to the asking price of this offering. Prime land and one of the few remaining level acreages in Southern Gulf Islands. It doesn't get any better than this folks!

KEY INFORMATION

MLS® R2596415

Residential Detached

Mayne Island

2 Bedrooms

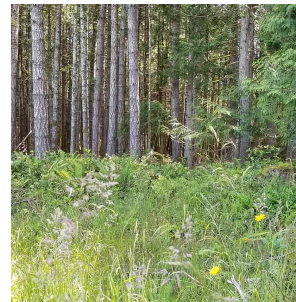
1 Bathroom

850 SF

FEATURES

Year Built: 1935

Listed By: Gulfport Realty



rennie