

# 13563 28 Avenue, Surrey

\$2,599,000



Great investment property! Located in a multi-million dollar neighborhood of prestigious Elgin Chantrell, rectangle shape, North and South facing ONE ACRE lot with a 165 feet frontage and a 264 feet depth. House is liveable with a new roof, rent it out or bring your imagination to build dream home with a walk-out basement. Walking distance to Chantrell Creek Elementary and Elgin Park Secondary. Easy access to Hwy 99, Nico-Wynd Golf Course.

## KEY INFORMATION

MLS® R2596521

Residential Detached

Elgin Chantrell

3 Bedrooms

3 Bathrooms

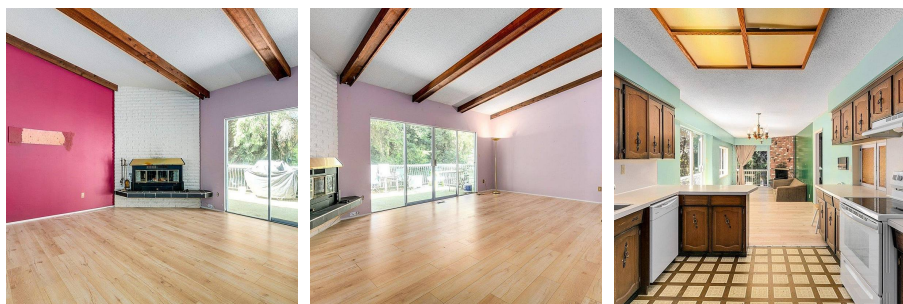
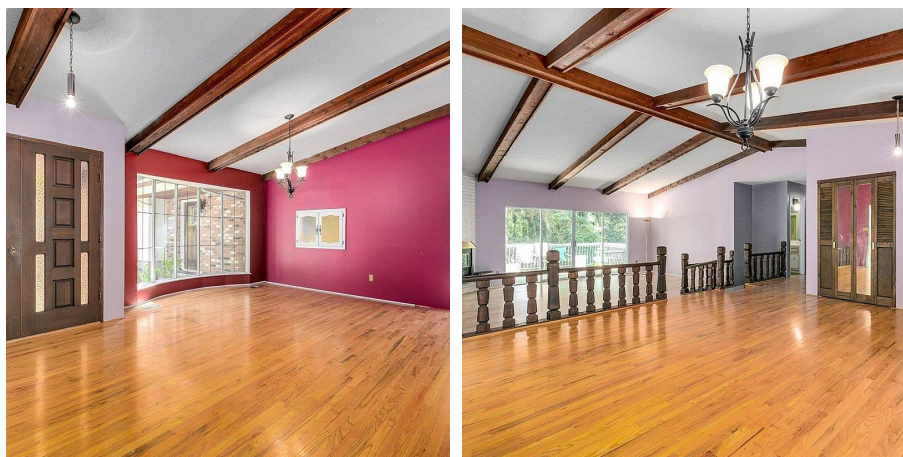
3,849 SF

43,566 SF Lot

## FEATURES

Year Built: 1971

Listed By: RE/MAX Colonial Pacific Realty



rennie