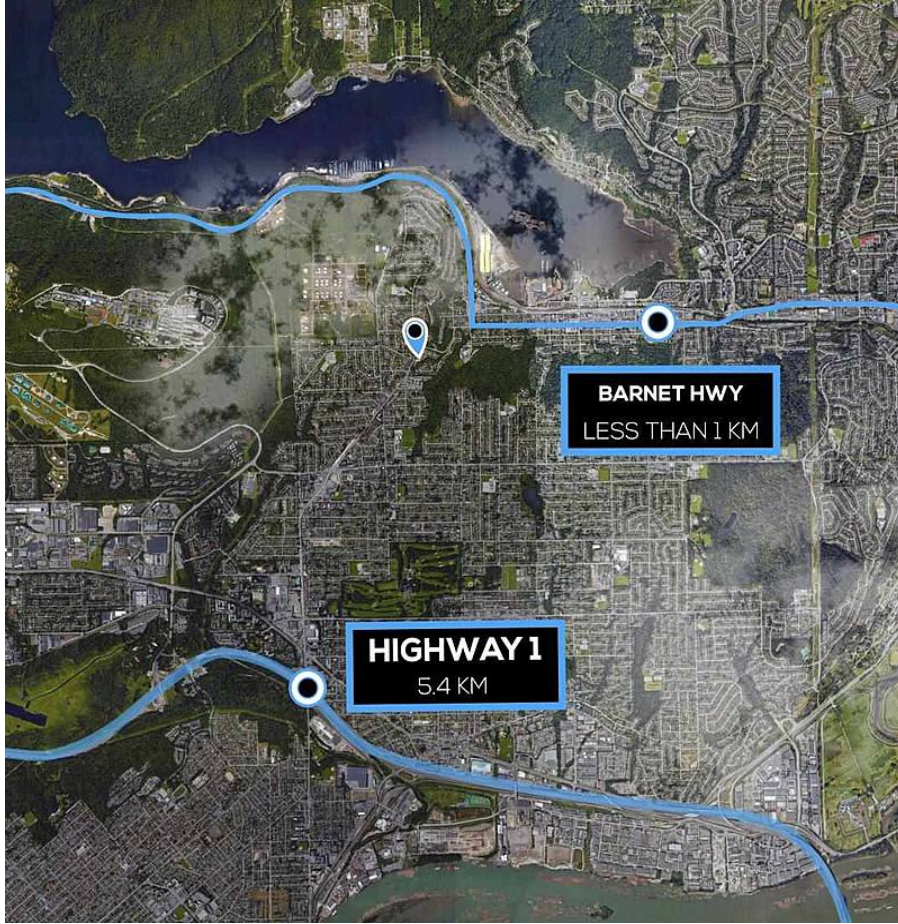


# 1019 Clarke Road, Port Moody

\$675,675



1007-1033 Clarke Road presents investors/ developers a rare opportunity to acquire a 100% freehold interest in an approximately 30,000 sf property improved with 14 town homes in the heart of port moody With a favorable suite-mix 2/bed,3/bed. There is tremendous value for rental portfolio and/or development up to 6 storeys. Majority of the Neighborhood is under an application for over 4000 units master plan community with daycare, grocery store, parks, trail, dog park and amenities by a well known developer. There are only 3 more properties available in this scale, subject property included. All units should be sold together. Not enough capital to buy all the units at once? no problem. Let us know and we will introduce you to other parties with the same situation.

## KEY INFORMATION

MLS® R2596216

Residential Attached

College Park

2 Bedrooms

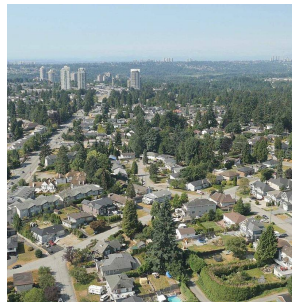
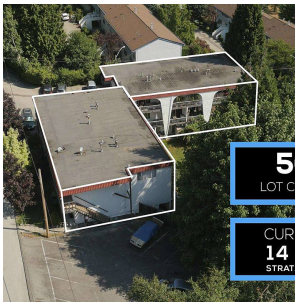
1 Bathroom

884 SF

## FEATURES

Year Built: 1969

Listed By: Sutton Group - 1st West Realty



rennie