

1502 2008 Rosser Avenue, Burnaby

\$949,000



STRATUS at Solo District developed by JIM BOSA's Appia. This 2 bdrms + Den, NW facing corner unit features spectacular City & Mountain view, enjoy the beautiful sunset at the large balcony, 9' ceiling makes the interior roomy and spacious, geo exchange air conditioning system, imported Italian cabinetry w/ quartz countertops in kitchen & bathroom. Top of the line Blomberg, Bosch & Fisher & Paykel appliances, engineered wood flooring and more. Amenities include rooftop fitness studio w/ sauna & steam rooms, covered rooftop BBQ area and fenced dog park. Large party room with full kitchen, poker & pool table. 24 hr concierge service. Located in the most sought after Brentwood Mall area, steps to Whole Foods, Starbucks, bus loop & Skytrain station. Call Now to book your private showing!

KEY INFORMATION

MLS® R2596793

Residential Attached

Brentwood Park

2 Bedrooms

2 Bathrooms

955 SF

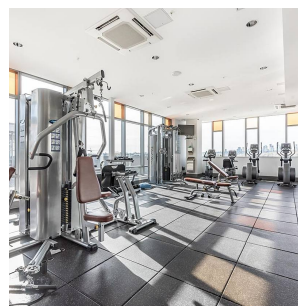
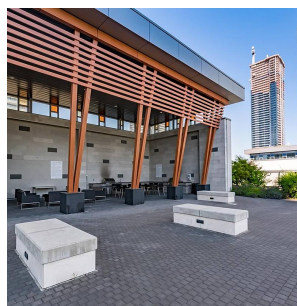
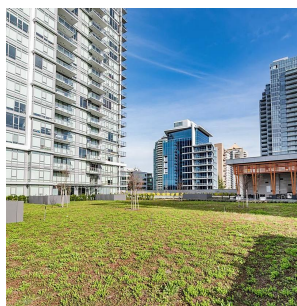
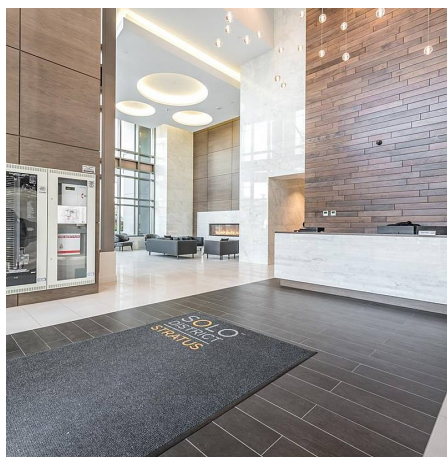
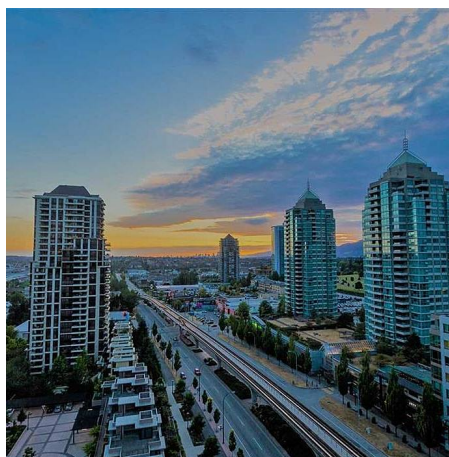
\$425.36 Maintenance Fees

FEATURES

Year Built: 2015

Views: City, Mountain

Listed By: Multiple Realty Ltd.



rennie