

909 13655 Fraser Highway, Surrey

\$679,900



King George Hub, Surrey's latest vibrant community. Be one of the first to live in this Spacious Corner 2 Bdrm/2 Bath NE facing home w/ balcony. Stylish interiors matched the entertainment sized living spaces w/ floor to ceiling windows to soak up the Mtn views. Chef's kitch equipped w/ integrated panelled fridge, stone ctrs, convection cooktop stove & durable cabinetry. Relax in the separated bdrms & spa-like baths. The Primary bdrm w/ walk-in closet, 4 pc bath & covered balcony. Live/Work/Play with the endless amenities for all ages! Fitness centre, Theatre, Lounge w/ kitch, Yoga rm, Party rm, Rooftop patio w/ Bbq & more! Leave the keys at home, commuting is a breeze just 40 mins downtown on the Skytrain & new Surrey-Langley Skytrain station. 1 Pkg/1 locker incl.

KEY INFORMATION

MLS® R2597559

Residential Attached

Whalley

2 Bedrooms

2 Bathrooms

802 SF

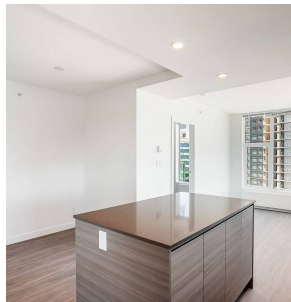
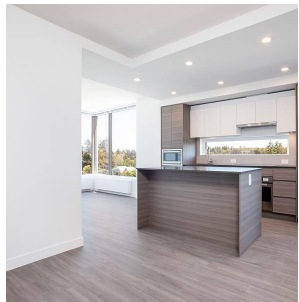
\$404.95 Maintenance Fees

FEATURES

Year Built: 2021

Views: NORTH SHORE MTNS & CITY

Listed By: rennie & associates realty ltd.



Salina Kai PREC*
604.773.7013
skai@rennie.com
rennie.com/salinakai



Danny Chow PREC*
604.765.2469
dchow@rennie.com
rennie.com/dannychow

rennie