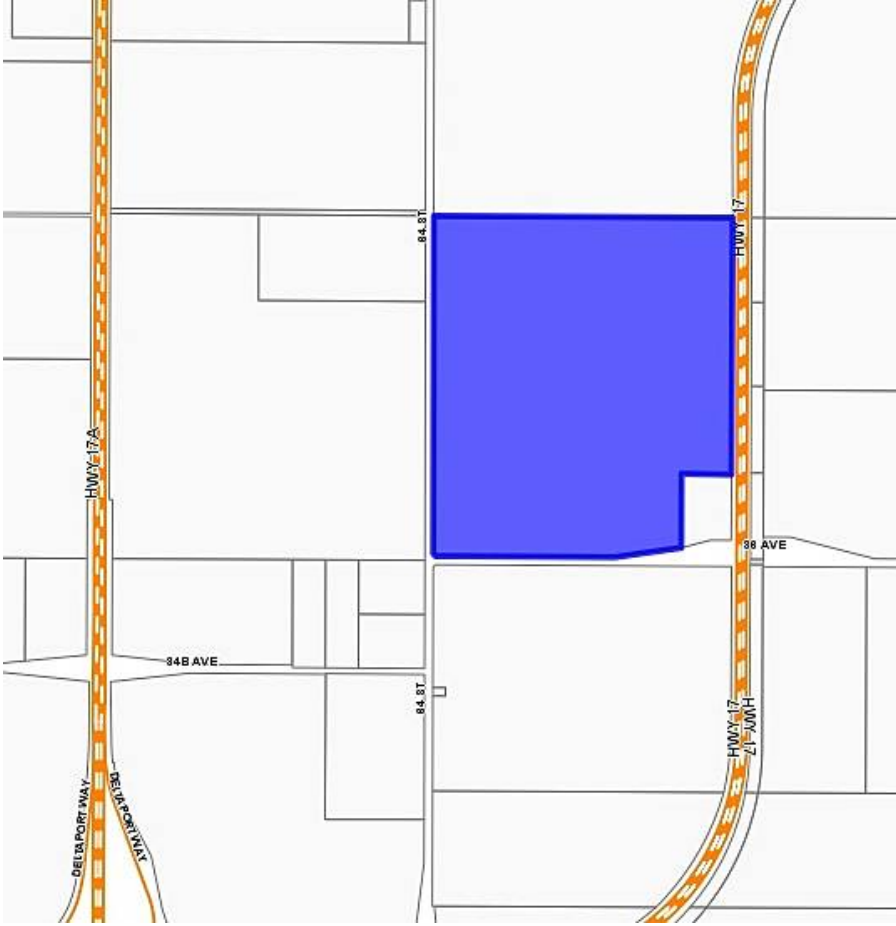


3820 64 Street, Delta

\$14,998,800



Prime farmland in historic Ladner! Rare opportunity to purchase from long-time owners. Outstanding location just 30 minutes to Vancouver with easy access to highways, Tsawwassen, South Surrey and more. 135.73 acres of fertile land including 3 separate dwellings that are all tenanted. Contact for more details!

KEY INFORMATION

MLS® R2597713

Residential Detached

Ladner Rural

3 Bedrooms

3 Bathrooms

2,880 SF

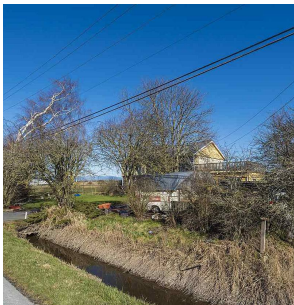
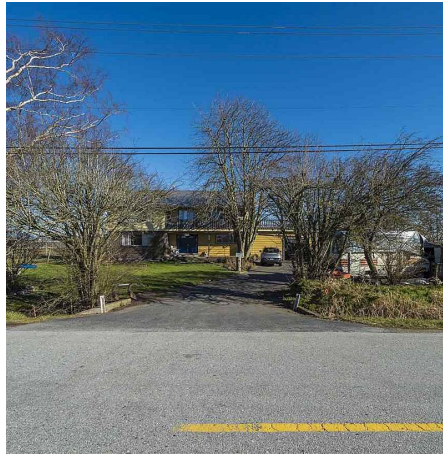
5,912,226 SF Lot

FEATURES

Year Built: 1965

Views: Farmland and N. Shore Mtns

Listed By: The Firm Real Estate Services Ltd.



rennie