

# 412 2250 Commercial Drive, Vancouver

\$849,000



Marquee on the Drive is UNMATCHED with no others in the area of this CONCRETE CONSTRUCTION building. This unit is a one of a kind 2 STOREY PENTHOUSE LOFT with two large outdoor balconies offering views of the neighborhood & city. The unit is almost brand new & hardly lived in, & was held by the developer. KitchenAid appliances & integrated refrigerator / freezer, gas range stove in the kitchen. Comes w/ a parking stall & a storage locker, building also has a gym & bike room. Located right on vibrant Commercial Drive, close to all amenities, public transit, Trout Lake & more!

## KEY INFORMATION

MLS® R2597703

Residential Attached

Grandview Woodland

1 Bedroom

2 Bathrooms

700 SF

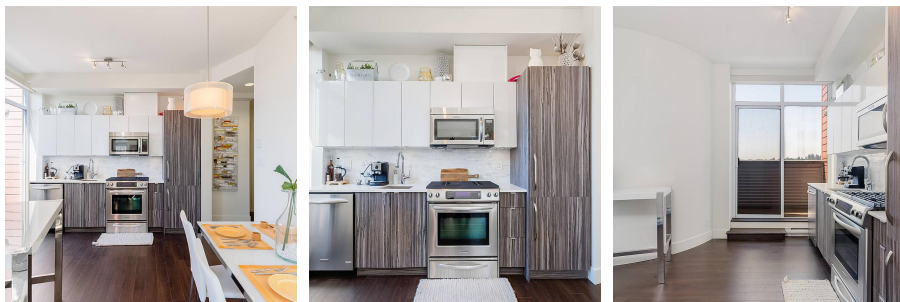
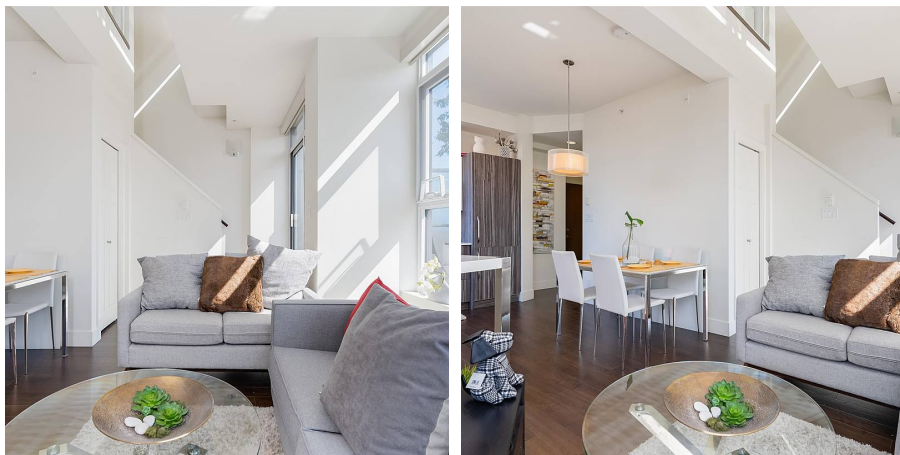
\$340.81 Maintenance Fees

## FEATURES

Year Built: 2014

Views: City, neighborhood & trees

Listed By: Sutton Group-West Coast Realty



rennie