

507 5485 Brydon Crescent, Langley

\$379,000



The Wesley on Brydon Creek. Modern exterior combined with open concept living and exceptional finishing interior. This top floor studio features high-quality laminate flooring, tile, gourmet style kitchen, Quartz countertops, stainless appliances and in-suite washer and dryer. Central location, close to downtown Langley, and steps away from restaurants, parks, schools, shops and public transit. 5 minutes to Willowbrook mall, near Newlands Golf and Country Club.

KEY INFORMATION

MLS® R2597843

Residential Attached

Langley City

1 Bedroom

1 Bathroom

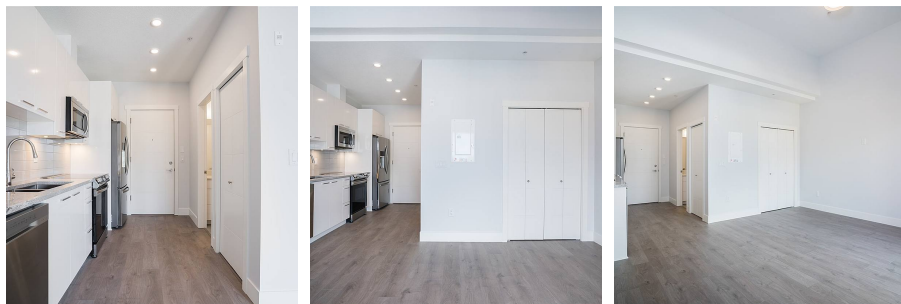
461 SF

\$129.04 Maintenance Fees

FEATURES

Year Built: 2021

Listed By: Sutton Group-West Coast Realty



rennie