

# 14150 62a Avenue, Surrey

\$1,749,000



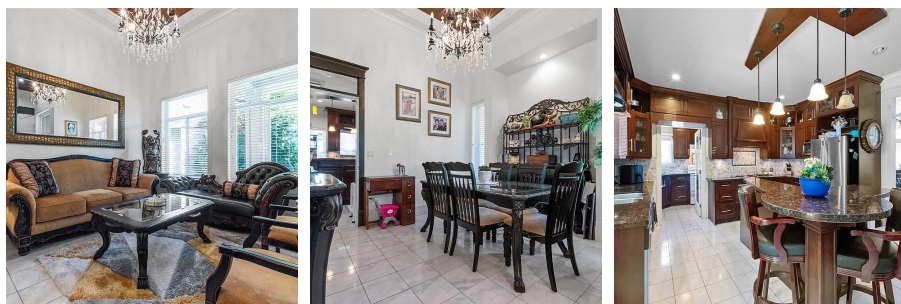
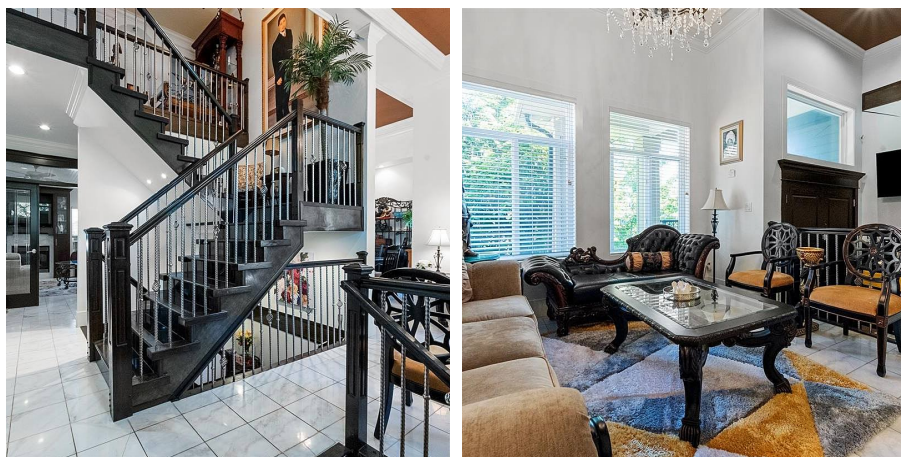
Custom built home totaling 5454 SF on 3 levels on 6261 SF cul de sac lot. 5 parking spots in the rear with lane access plus 2 parking stalls in the front. 12ft ceilings in living and dining room, granite stairs, granite flooring, and granite countertops, large kitchen with a spice kitchen and a huge pantry. Walking distance to McLeod Road Traditional School and Sullivan Secondary School, Tim Hortons, Subway, Popeyes Louisiana Kitchen, Triple O's, Esso, McDonalds is just minutes away! Over \$4500 monthly rent from tenants which pays for over \$1.2 million in mortgage payments per month\*! No showings at the moment.

## KEY INFORMATION

MLS® R2597592  
Residential Detached  
Panorama Ridge  
10 Bedrooms  
8 Bathrooms  
5,454 SF  
6,261 SF Lot

## FEATURES

Year Built: 2009  
Listed By: Century 21 Coastal Realty Ltd.



rennie