

8447 192 Street, Surrey

\$6,995,000



Centrally located 5+ acres of future development land. This area is one of the most favourite in City of Surrey for executive homes. Build your dream home here and wait for the future development. Property is not in ALR and currently rented. Please contact for more information.

KEY INFORMATION

MLS® R2598079

Residential Detached

Port Kells

3 Bedrooms

1 Bathroom

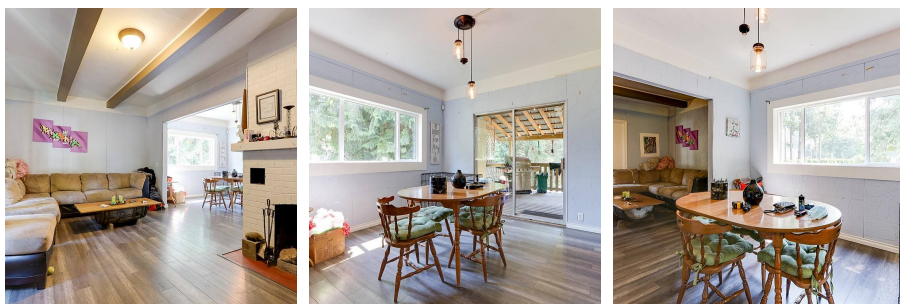
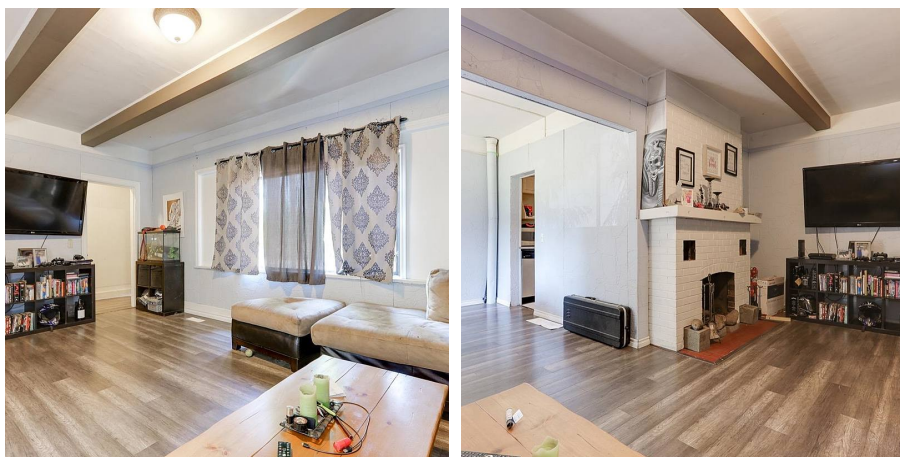
2,190 SF

220,164 SF Lot

FEATURES

Year Built: 1935

Listed By: Cushman & Wakefield



rennie