

9660 Herbert Road, Richmond

\$5,180,000



A spectacular masterpiece located in Richmond's most prestigious neighbourhood of Broadmoor. Impressive quality & finishing in the contemporary 4491 sqft home situated on a huge 10603 sqft lot. Enjoy the 2 expansive master bedrooms and 2 other lovely bedrooms on the upper level, in addition to the guest bedroom on the main floor all with ensuite. Complete home automation system with eight security cameras, subzero fridges, Wolf stove, Miele coffee machine, sleek high-end cabinet, Cavali tiles, beautiful flooring and charming lighting, all the perfect accessories for the ideal home. Central location and great school catchment: Errington Elementary & Steveston-London Secondary.

KEY INFORMATION

MLS® R2598511

Residential Detached

Broadmoor

5 Bedrooms

6 Bathrooms

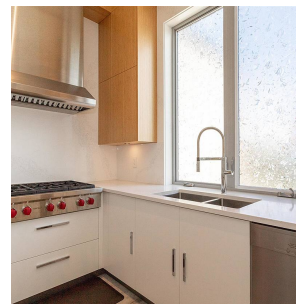
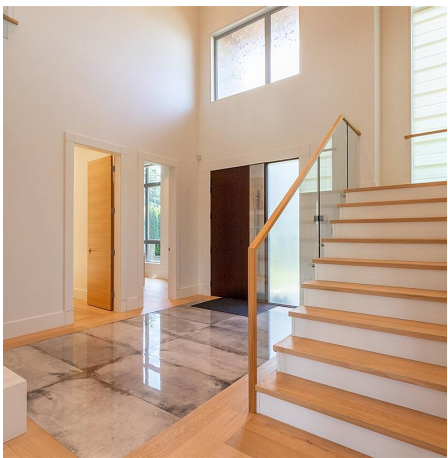
4,491 SF

10,603 SF Lot

FEATURES

Year Built: 2018

Listed By: Royal Pacific Realty Corp.



rennie