

28 E 1st Avenue, Vancouver

\$1,500,000



Limited edition 2-level, Air-conditioned 3 bedroom Townhome by Pinnacle International at False Creek. View of city and park with cozy patio for entertainment. Full-size appliances, heat pump for cooling and heating, and in-suite storage. Nice layout with 1 bedroom and powder room on the main floor. Steps away from trendy restaurants, brew pubs and performance arts theatre. Vancouver Tech Hub is just south of 2nd Ave, Skytrain/Canada Line stations are just minutes away. Renowned Emily Carr University of Art and Design is a short bike ride away Move-in ready. Call now for private viewing.

KEY INFORMATION

MLS® R2599411

Residential Attached

Mount Pleasant

3 Bedrooms

3 Bathrooms

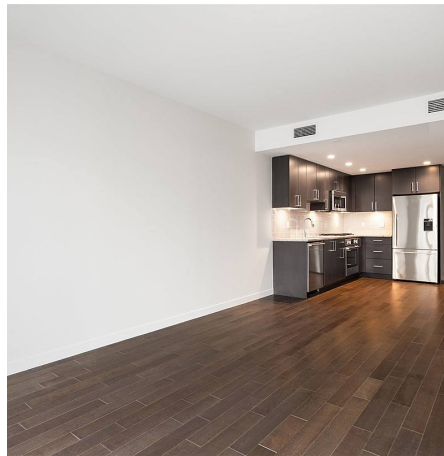
1,192 SF

FEATURES

Year Built: 2019

Views: PARK VIEW

Listed By: Anson Realty Ltd.



rennie