

# 602 13655 Fraser Highway, Surrey

\$449,900



LIVE in the heart of Surrey City Centre @ King George Hub by PCI. This newly completed 1 bed comes with 2-5-10 warranty and WITH 1 parking. Interiors by BYU Design, efficient layout, large 117sqft private balcony & floor to ceiling windows enabling maximum enjoyment of the south facing green & city views. Chef-ready kitchen: Blomberg stainless steel appliances, induction cook top, Fulgor wall oven, quartz countertop, modern and durable wood laminate cabinetry with white accent upper cabinets! Great amenities: rooftop lounge, games room, BBQ, children's play area, theatre, caretaker, secure fob access throughout, yoga, and gym. Wonderful location steps to the King George Hub skytrain station, parks, shopping, SFU Surrey, restaurants, bars and cafes. Showings by apmt, call or text!

## KEY INFORMATION

MLS® R2599467

Residential Attached

Whalley

1 Bedroom

1 Bathroom

506 SF

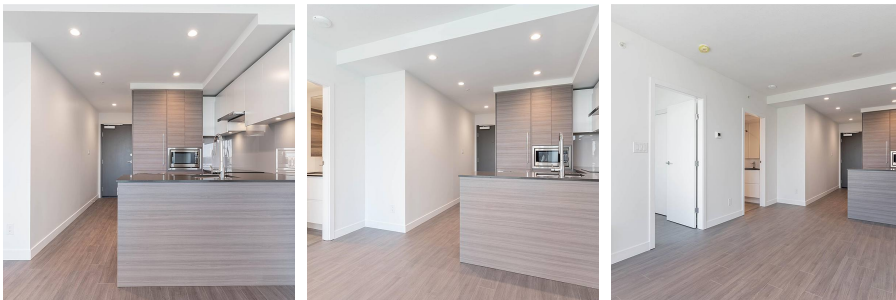
\$253.77 Maintenance Fees

## FEATURES

Year Built: 2021

Views: SOUTH: Greenspace

Listed By: rennie & associates realty ltd.



**Jane Chu** PREC\*  
778.886.3303  
janechu@rennie.com  
rennie.com/janechu

**rennie**