

# 43809 Ryall Road, Mission

\$1,600,000



From the moment you approach this home, you will be intrigued to get inside and experience this gorgeous, 1 year old home. Built to the highest standards, this 4,420 sq/ft home encompasses everything you are looking for in your Lakeside residence—a unique design with 2 separate lofts upstairs ideal for multi-generational living. Exposed beams and perfectly placed window features allow sunshine to pour into this open concept home. 5 bed, 5 bath. All the extras you can think of, Central AC with 3 separate zones, 5G wired, heated crawl space, H/W on-demand, to name a few. Chef's kitchen+prep kitchen. Flat 8,723sq/ft lot, grassy backyard, spacious laundry room & 2 car garage. Located an easy scenic 15min drive east of Mission in desirable Lake Errock, half a block away from the gorgeous lake.

## KEY INFORMATION

MLS® R2600300

Residential Detached

Lake Errock

4 Bedrooms

5 Bathrooms

4,420 SF

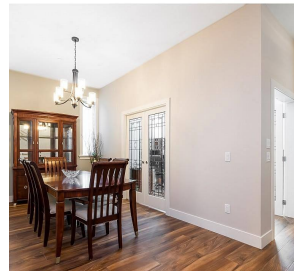
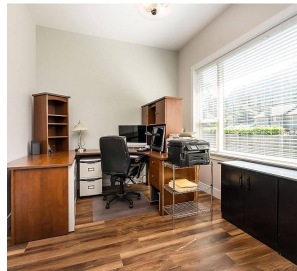
8,723 SF Lot

## FEATURES

Year Built: 2020

Views: Mountains

Listed By: Royal LePage Wheeler Cheam Realty



rennie