

270 8140b Williams Road, Richmond

\$268,000



This spacious yet cozy home in Mayfair Court offers the convenience of privacy yet close proximity to recreation as well as shopping and schools. This three bedroom, 2 bathroom unit is well illuminated and has access to shopping at Richlea Square Shopping Centre and Broadmoor Village. It's minutes away from South Arm Community Centre (one minute drive or 7 minutes on foot) and public transportation. In very close proximity to William Bridge Elementary, Maple Lane Elementary and McRoberts Secondary Schools. Great opportunity for investors as well for rentals are allowed.

KEY INFORMATION

MLS® R2600313

Residential Attached

South Arm

3 Bedrooms

2 Bathrooms

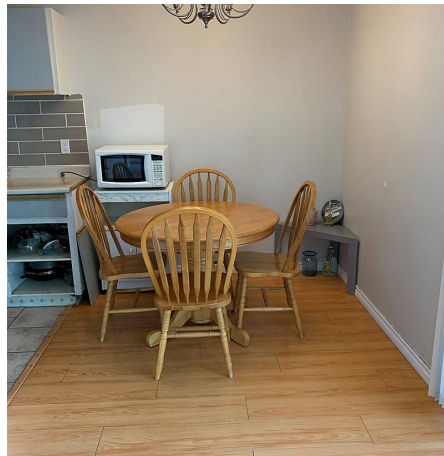
1,050 SF

\$725.00 Maintenance Fees

FEATURES

Year Built: 1970

Listed By: Saba Realty Ltd.



rennie