

908 7371 Westminster Highway, Richmond

\$668,000



Welcome to Lotus by Cressey. This bright and spacious 2 bedroom 2 bath corner unit features southern exposure panoramic view of the Minoru Park & cityscape. Centrally located, steps to all the everyday essentials including Richmond Library, CF Richmond Center, & a wide variety of eateries & shops, <10 mins walk to Skytrain & Bus Exchange. Resort level amenities on site including indoor swimming pool, hot tub, steam/dry sauna, exercise room, meeting lounge, courtyard & play-area. Energy efficient geothermal heating & air-conditioning make your home comfortable in any season.

KEY INFORMATION

MLS® R2600598

Residential Attached

Brighthouse

2 Bedrooms

2 Bathrooms

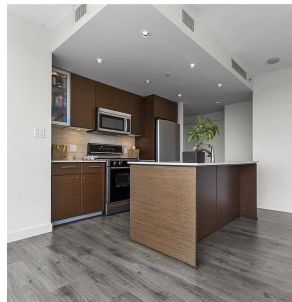
872 SF

\$429.02 Maintenance Fees

FEATURES

Year Built: 2008

Listed By: rennie & associates realty ltd.



Vivien Ma PREC*
604.828.2268
vma@rennie.com
rennie.com/vivienma

rennie