

# 2870 Sw Marine Drive, Vancouver

\$19,900,000



Between Vancouver's exclusive Kerrisdale and Southlands neighbourhoods, this expansive 7-bdrm, 11,200sqft home on ~2.4 acres of land provides the peace and quiet of the countryside with all the conveniences of city living. The immaculate grand foyer leads into an intimate sitting room and spectacular office that flows into the dining area which displays the true scale of this open concept, Juli Hodgson designed home. The massive entertainer's kitchen features a 25ft long Corian island, top-of-the-line appliances & ample storage for the most seasoned home chef. Downstairs, the luxury amenities continue with a gym, games room with pool table, media room, wet bar and full spa with a steam shower and infrared sauna. Completed by an outdoor pool and tennis court, this is a true luxury estate.

## KEY INFORMATION

MLS® R2601778

Residential Detached

Southlands

7 Bedrooms

11 Bathrooms

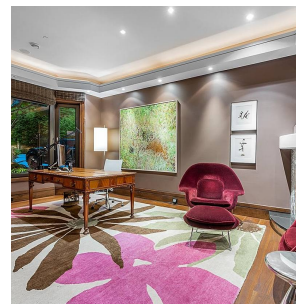
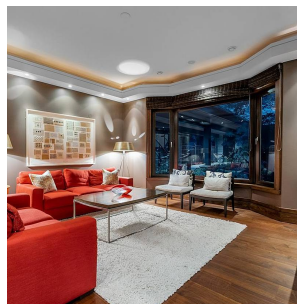
11,271 SF

99,300 SF Lot

## FEATURES

Year Built: 1997

Listed By: Engel & Volkers Vancouver



rennie