

1002 6900 Pearson Way, Richmond

\$1,099,000

"Two River Park Place" by award-winning INTRACROP. Fabulous southeast facing two bedroom plus den unit and Two full baths. This project is located in the heart of Richmond's newest and most vibrant neighborhood - Oval Village. Steps away from T&T supermarket, Olympic Oval, restaurants, coffee shops, banks, etc. One Parking and One Locker.



KEY INFORMATION

MLS® R2600829

Residential Attached

Brighthouse

2 Bedrooms

2 Bathrooms

978 SF

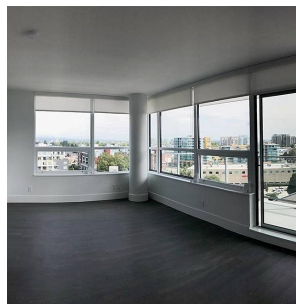
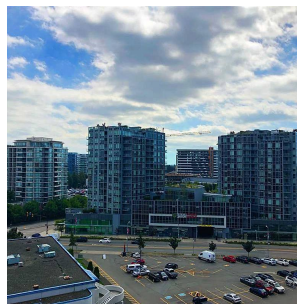
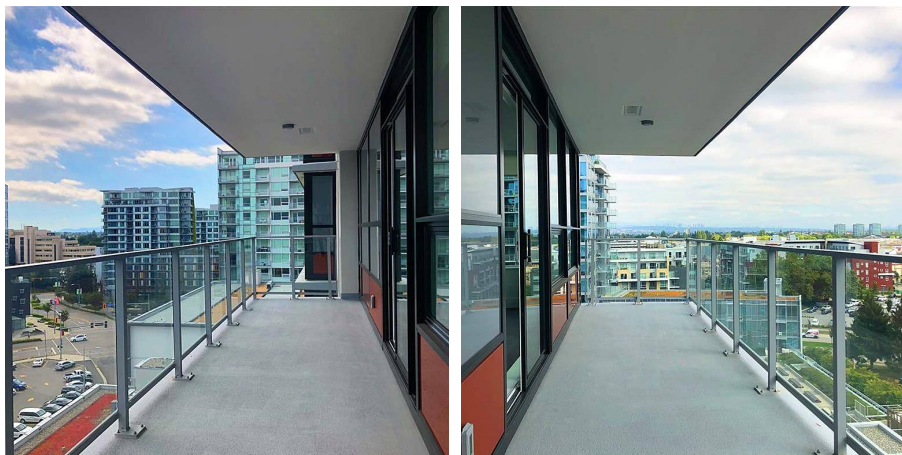
\$570.00 Maintenance Fees

FEATURES

Year Built: 2020

Views: City

Listed By: LeHomes Realty



rennie