

608 7338 Gollner Avenue, Richmond

\$1,080,000



CARRERA by Polygon! Centrally located in the Richmond center. Walking distance to Skytrain station, Richmond Center Mall, City of Richmond, Minoru park. 1028 sqft spacious 2 bedrooms, over height ceilings & a gourmet kitchen with Bosch appliances & marble backsplashes. Relax in a spa-inspired ensuite featuring a spacious walk-in shower with European style thermostatic controls, floating wood cabinets & luxury marble flooring. Clubhouse amenities include a fitness studio, wine tasting room, meeting room, BBQ patio. 1 parking, 1 Locker. Strata fee including heat, A/C, garbage, management, water, hot water, gas, insurance.

KEY INFORMATION

MLS® R2601581

Residential Attached

Brighthouse

2 Bedrooms

2 Bathrooms

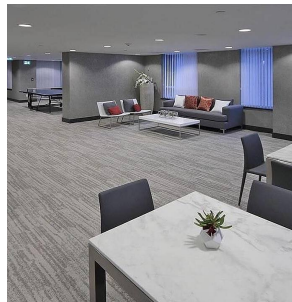
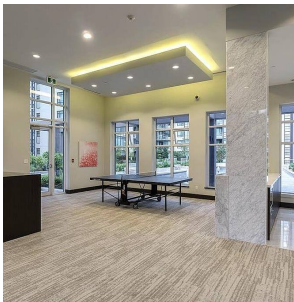
1,028 SF

\$499.00 Maintenance Fees

FEATURES

Year Built: 2015

Listed By: Jovi Realty (Richmond) Inc.



rennie