

9202 Pinetree Lane, Whistler

\$1,700,000



This spacious lot in Emerald has fantastic views of Arm Chair and Wedge Mountain. Take advantage of this wonderful elevated lot assuring privacy and mountain views. This serviced corner lot sides/backs onto parkland, is on the bus route, is a short walk to Emerald Park and the Green Lake boat launch. Emerald is a wonderful family neighbourhood and is only a 5 minute drive to Whistler Village shopping, restaurants and Whistler Blackcomb Gondola's. You can build up to 3500 sq ft and this lot is GST exempt.

KEY INFORMATION

MLS® R2601964

Land Only

Emerald Estates

0 Bedrooms

0 Bathrooms

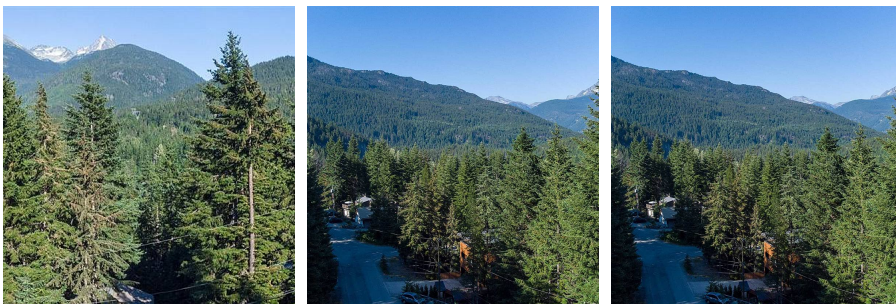
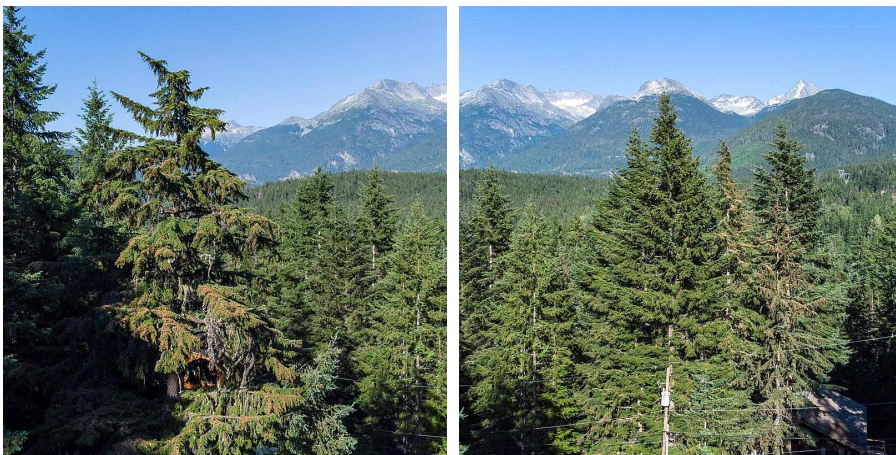
0 SF

9,869 SF Lot

FEATURES

Views: MOUNTAINS

Listed By: RE/MAX Sea to Sky Real Estate



rennie