

302 33328 E Bourquin Crescent, Abbotsford

\$535,000



Welcome to LUXURIOUS LIVING in the sought after Nature's Gate Development! This third floor CORNER UNIT, boasts calming Views of Masterfully Landscaped Gardens & Green Space, all from the comfort of 2 Large separate Balcony's! Step inside the largest OPEN FLOOR PLAN, that the development has to offer & be amazed of the PREMIUM FINISHING'S such as Laminate Flooring, Designer Paint, Modern Light Fixture's, Steel Appliances, Granite Counters, Tiled Back Splash, Sleek Fire Place, Big Bedrooms, with BONUS DEN to make a 3rd Bedroom & Extra Oversized Windows, letting in plenty of NATURAL LIGHT! Walking distance to shopping, transit, recreation & everything else, this sought after location has to offer!

KEY INFORMATION

MLS® R2602873

Residential Attached

Central Abbotsford

2 Bedrooms

2 Bathrooms

1,264 SF

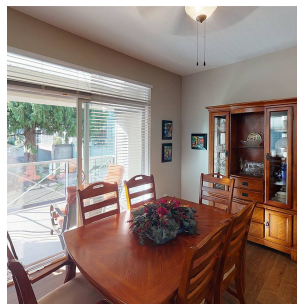
\$486.00 Maintenance Fees

FEATURES

Year Built: 2008

Views: Green Space, Gardens

Listed By: rennie & associates realty ltd.



Anne-Mari Morrison
604.302.5355
amorrison@rennie.com
rennie.com/annemariamorrison

rennie