

# 109 228 Sixth Street, New Westminster

\$599,000



Moody on the Hill, the newest addition of modern condominiums located at the corner of 6th and Welsh Street in Queens Park community of New Westminster, just 10 minutes of leisure walking away from the Columbia and New Westminster SkyTrain Stations. Moody Hill homes are a part of a lively surrounding, just steps from plaza, grocery stores, boutiques, and restaurants. Moody on the Hill at your door step offers optimal enjoyment of river front community. The 6 storey building featuring homes designed with attention to detail and a perfect mix of style and functionality infused to each home. Featuring 9' ceilings, open concept living, stainless steel appliances, high quality cabinets and flooring.

## KEY INFORMATION

MLS® R2603293

Residential Attached

Uptown

2 Bedrooms

2 Bathrooms

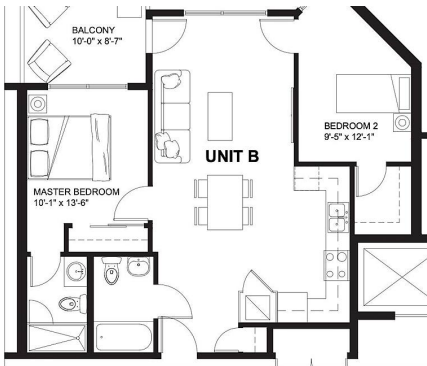
834 SF

\$292.21 Maintenance Fees

## FEATURES

Year Built: 2022

Listed By: Royal Pacific Realty Corp.



**UNIT B**  
2 BEDROOM + 2 BATH  
INTERIOR: 834 SQ.FT.  
EXTERIOR: 86 SQ.FT.  
TOTAL: 920 SQ.FT.

**rennie**