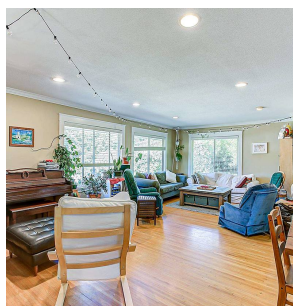
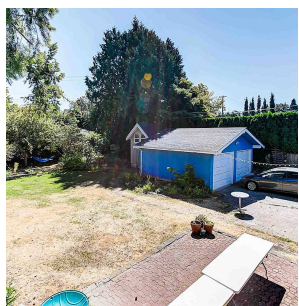
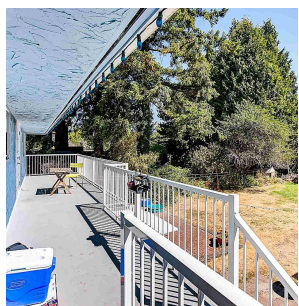


1650 Western Parkway, Vancouver

\$4,880,000



Investor Alert! STUNNING UNIVERSITY LAND with building plan! On quiet park like street. 80 X 172.50 Free Hold big lot with Views Out front of Flower Beds & Luxuriant Green Boulevard! SIGNIFICANT RENOVATIONS Include Newer Kitchen with SS Appl, Granite Counters, Cherry Stained Wood Cabinets, Newer Bathrooms, Flooring & MORE! Large Principal Rooms, Beautiful Solid H/W Floors, 5 Bdrms and 1 office 4 baths, spacious Living, Dining, Games & Family Room. IDEAL FOR FAMILY LIVING! Lovely French Doors from Dining Room Opens Onto Deck OVERLOOKING AN AMAZING Rear Garden w/ Enchanting Play House, Rodos, Apple, Plum & Cherry Trees. A GARDENER'S PARADISE! Walk to UBC, Trails, Parks, Recreation, Chan Ctr, UBC Village Shops, cafes, restaurants, Pacific Spirit, golf, Transit & THE BEACHES!

KEY INFORMATION

MLS® R2604466

Residential Detached

University

5 Bedrooms

4 Bathrooms

2,787 SF

13,800 SF Lot

FEATURES

Year Built: 1971

Views: Mountain

Listed By: Luxmore Realty

rennie