

1602 1708 Ontario Street, Vancouver

\$1,239,900



High-level 2 bed plus den Southeast exposure unit at popular SE False Creek area. Steps away from trendy restaurants, brew pubs and performance arts theatre. Sky-train stations just minutes away; Renowned Emily Carr University of Art and design is just a short bike ride away. Suites equipped with full size appliances, heat pump for cooling (air conditioning) and heating. Move in ready. Call now for private viewing.

KEY INFORMATION

MLS® R2604859

Residential Attached

Mount Pleasant

2 Bedrooms

2 Bathrooms

900 SF

\$454.42 Maintenance Fees

FEATURES

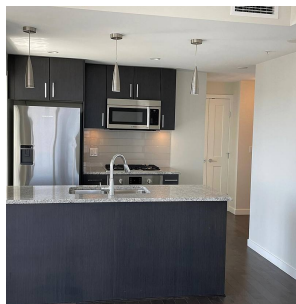
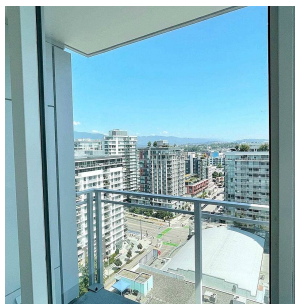
Year Built: 2019

Views: CITY VIEW

Listed By: Anson Realty Ltd.

PINNACLE
ON THE
PARK

Suite: 900 SQ.FT.
Balcony: 41 SQ.FT.
Total: 941 SQ.FT.



rennie